



**Australian Government**  

---

**Attorney-General's Department**

**Australian  
Urban Search & Rescue  
Canine Capability Best Practice Guideline**

Version 1.1 (November 2009)

# Table of Contents

Modification History Details .....	3
Introduction .....	5
Background.....	5
Definitions .....	6
Guideline Overview .....	8
Objectives .....	8
Elements of Assessment.....	8
Effective Date and Revision .....	8
Australian USAR Canine Capability Operational Framework.....	9
Pre-Requisites .....	10
Canine search specialist .....	10
Disaster search canine.....	11
Assessors .....	12
Veterinary Advisor.....	12
Application for Assessment .....	13
Operational Status (Certification).....	13
Skills Maintenance and Re-Certification.....	14
Canine Search Teams.....	14
For the Advanced Operational Assessment Only.....	14
Assessors .....	14
Aggression.....	15
Definition.....	15
Aggression Policy.....	15
Aggression Repercussions.....	15
Code of Conduct .....	16
Appeals.....	17
Assessment Procedures.....	18
Assessment Panel Requirements.....	18
Lead Assessor Roles and Responsibilities .....	19
Ground Rules.....	20
Assessment Procedure .....	21
Timing.....	22
Element One- Search Work (Basic Operational) .....	23
Element One- Search Work (Advanced Operational) .....	26
Element Two – Canine Welfare and Maintenance .....	29
Appendices .....	30
Application for Assessment - Basic Operational Level .....	31
Application for Assessment - Advanced Operational Level .....	33
Pre-Assessment Briefing .....	35
Assessment Sheet – Basic Operational.....	36
Assessment Sheet – Advanced Operational.....	40
Assessment Descriptors – Basic and Advanced Levels .....	45
Code of Conduct for Canine Teams .....	48
Not Yet Competent Assessment Process .....	49
Guidelines for Construction of Preparatory Training Facilities .....	50

## Modification History Details

Version	Release Date	Authorisation	Comments
Draft	April 2008		<p>Page 12 Added word "annually" to the paragraph above the heading "For the Advanced Operational Assessment Only"</p> <p>Page 13 Added word "whilst" to second paragraph</p> <p>Page 13 Modified paragraph regarding short-term repercussions to be more a more inclusive consultation process.</p>
Draft	September 2008	CTC	<p>Modified the definition of canine search team from  Disaster Search Canine, canine search specialist and support personnel  To read  A certified canine team is one (1) disaster search canine, and one (1) canine search specialist who have as a team successfully completed the basic and/or advanced operational assessment.</p>
Draft	September 2008	CTC	<p>Added definition for dual handling Added definition for support personnel</p>
Draft	November 2008	CTC	<p>Addition of new Appendix "Guidelines for Construction of Preparatory Training Facilities"</p>
Draft	December 2008	CTC	<p>Draft unit of competency names changed All reference to dog changed to canine All reference to handler changed to canine search specialist In Appendix "Guidelines for Construction of Preparatory Training Facilities"</p> <ul style="list-style-type: none"> <li>• Down Stay Under Distraction Guidance Notes Added</li> <li>• Emergency Stop Guidance Notes expanded</li> <li>• General Guidance Notes added</li> <li>• Agility course notes modified</li> <li>• Direction and Control Course instructions expanded with last bullet point</li> </ul>
Draft	March 2009	CTC	<p>Appendices completed</p>
Draft	April 2009	CTC	<p>Final Endorsement by NUSARWG Canine Technical Committee</p>
Version 1	May 2009	NUSARWG	<p>Final Endorsement of NUSARWG</p>
Version 1.1	November 2009	CTC	<p>Updated with correct names of units of competency</p>
Version 1.1	November 2009	CTC	<p>Removed all reference to performance criteria 5.3 Canine Welfare and Maintenance</p>
Version 1.1	November 2009	CTC	<p>Updated with correct names of units of competency</p>
Version 1.1	November 2009	CTC	<p>Reworded assessment tools and assessment descriptors to reflect unit of competency terminology</p>
Version 1.1	November 2009	CTC	<p>Updated operational framework table</p>
Version 1.1	November 2009	CTC	<p>Addition of vaccination requirements for Canine Search Specialist</p>
Version 1.1	November 2009	CTC	<p>Reads Rationale The canine search team must be capable of working together in disaster search operations to locate victims. The canine search specialist will be evaluated on his/her ability to function as a canine search specialist. The canine must be capable of searching independently and efficiently, as directed by the canine search specialist. The canine must demonstrate strong commitment to each scent source, however the focus of the bark indication may be towards either the victim or the canine search specialist.</p> <p>Change to The canine search team must be capable of working together in disaster</p>

			search operations to locate victims. The canine search specialist will be evaluated on his/her ability to function as a canine search specialist. The canine must be capable of searching independently and efficiently, as directed by the canine search specialist.
Version 1.1	November 2009	CTC	changed the order of interview questions
Version 1.1	November 2009	CTC	<p>Reads</p> <p><b>What assistance can be given to the Canine</b></p> <p>Provide motivation and support where necessary, however during an alert, support and motivation can only be provided <i>after</i> the canine has initiated alert behaviour.</p> <p>Change to</p> <p>Provide motivation and support where necessary, however during an alert, support and motivation can only be provided <i>after</i> the canine has initiated the bark alert.</p>
Version 1.1	November 2009	CTC	Inserted an Assessment Summary sheet for basic and advanced assessments
Version 1.1	November 2009	CTC	1.1 Interview, site assessment, Risk Assessment and search strategy Assessment descriptors rewritten to incorporate risk assessment requirements
Version 1.1	November 2009	CTC	5.2 Canine is compliant with basic care routines Assessment descriptors rewritten to reflect assessment of handler NOT canine.
Version 1.1	November 2009	CTC	<p>Reads</p> <p>2. Elevated Plank</p> <p>A plank elevated at least 1m and no more than 2m off the ground. The plank must be 220 to 300mm wide, 3-5m long and is to be stable.</p> <p>Change to</p> <p>2. Elevated Plank</p> <p>A plank elevated at least 1m and no more than 2m off the ground. The plank must be 220 to 300mm wide, 3-5m long and is to be stable with a non-slip surface</p>

## Introduction

### **Background**

This guideline offers a three-tiered approach to the development of a canine search team suitable for deployment to a USAR incident as part of a USAR Task Force.

The first level (Foundation Skills Assessment) is a preparatory level and is considered non-operational. The second and third levels, (basic operational and advanced operational) are considered operational levels. This guideline provides assessment arrangements for the operational levels only.

The basis of this guideline is a combination and customisation of the following national and international guidelines;

- NZ Canine Readiness Assessment Process (CREP)
- Australian Swiss Search Dog Association (ASSDA)
- FEMA Canine Search Specialist Certification Process (CSSCP)
- Search and Rescue Dogs Australia (SARDA)
- REDOG

The above listed guidelines have been tested extensively both in training and in operations. The Australian guideline draws on the most suitable elements of these for the urban search and rescue environment and capability in Australia.

## Definitions

<b>Abuse</b>	Physical, psychological, verbal maltreatment of the canine.
<b>NUSARWG Canine Technical Sub-Committee</b>	Technical committee working to the NUSARWG Committee to provide technical advice and expertise on the development and maintenance of the Australian USAR canine capability.
<b>Aggression</b>	An attempted or actual unprovoked attack on another canine or person.
<b>AQTF</b>	The Australian Quality Training Framework (AQTF) is the national set of standards which assures nationally consistent, high-quality training and assessment services for the clients of Australia's vocational education and training system.
<b>Assessor</b>	Person qualified to undertake assessment of canine teams at basic and advanced operational level, able to form and record a judgment about a canine team's skills and knowledge.
<b>Canine search specialist</b>	Canine handler with specific training in USAR
<b>Canine Search Team</b>	A certified canine search team is one (1) disaster search canine, and one (1) canine search specialist who have as a team successfully completed the basic and/or advanced operational assessment.
<b>Care and Safety of Canine</b>	Includes appropriate vet check, offers canine water, stripping of vest and collar while searching, and no abuse of any kind.
<b>Control of Canine</b>	While remaining in the specified search area (according to the site parameters), the canine search specialist is able to recall and/or halt the canine if the canine enters, or attempts to enter, site specific unsafe areas. These areas (including the other search site) will be legitimate, real-world hazardous areas and identified in the briefing.
<b>Disaster Search Canine</b>	Canine specifically trained for USAR incidents. Also referred to in this document as "canine".
<b>Dual Handling</b>	A disaster search canine can successfully complete a basic and/or advanced operational assessment with more than one canine search specialist. A canine search specialist can successfully complete a basic and/or advanced operational assessment with more than one disaster search canine.
<b>False Alert(s)</b>	Any location incorrectly identified by the canine as a live victim.
<b>Focal Point</b>	A single designated notification point/person capable of receiving all official notifications of disaster related communications. To accomplish this, the following requirements are necessary. The Team focal point must be: <ul style="list-style-type: none"> <li>- constantly available and staffed</li> <li>- capable of gathering, exchanging and disseminating information with all concerned</li> <li>- capable of alerting staff and Team members.</li> </ul>
<b>INSARAG</b>	International Search and Rescue Advisory Group
<b>Lead Assessor</b>	Assessor responsible for duties described in the assessment procedures in this document.
<b>Minimum PPE for Rubble Search</b>	Canine search specialist must wear helmet, long pants/long sleeves, safety toe/steel shank boots. Canine search specialist must also have gloves, eye protection and knee pads as they may be required by hosting task force. <i>N.B. - Additional PPE may be required as determined by a risk assessment.</i>

<b>NUSARWG</b>	National USAR Working Group (Australia)
<b>Operational Level</b>	An assessment of the minimal skills identified as necessary for a team to operate in USAR disaster environments
<b>Repetitive Barking</b>	Spontaneous repetitive barking for twenty (20) seconds. Barking may be interspersed with digging and attempts to penetrate.
<b>Search Area</b>	The area defined within a search site used for one search
<b>Search Site</b>	Search site is the entire geographical location which can include multiple search areas
<b>Support Personnel</b>	Support personnel may include, but is not limited to; team leaders, safety officer, veterinarians
<b>The Guideline</b>	This document
<b>Unit of Competency</b>	A unit of competency is the specification of knowledge and skill, and the application of that knowledge and skill, to the standard of performance expected in the workplace. A unit of competency is the smallest unit that can be assessed and recognised

## Guideline Overview

### Objectives

The objectives of this guideline are to:

- Establish the acceptable operational level of canine search teams
- Ensure developing capabilities are clear about what they are expected to achieve
- Develop a fair and objective process that can be conducted independently within Australia
- Provide operational certification consistent with international guidelines
- Provide feedback regarding the strengths and weaknesses of canine search teams for targeted improvement
- Use the review process as an opportunity to share techniques and ideas between canine search specialists on how to address issues arising during the assessment process
- Provide a process that can be internationally peer reviewed.

### Elements of Assessment

The core components of the testing processes for the Australian guideline are as follows:

1. Canine Search work
2. Canine Welfare and Maintenance

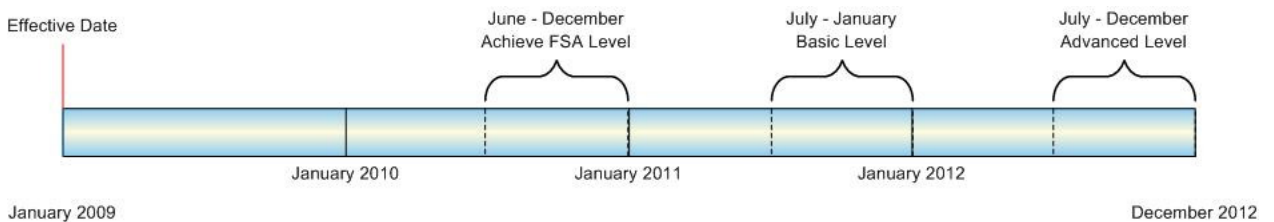
### Effective Date and Revision

The guideline becomes effective January 1st, 2009. To allow for each jurisdiction to build their capabilities in a sustainable manner, a transitional period will be allowed for.

It is anticipated that by January 1<sup>st</sup> 2011 each jurisdiction with a canine capability will have achieved at least basic operational level and be working towards the advanced operational level. The future goal is that by 2012 all jurisdictions canine capabilities will be operating at advanced operational level as the minimum level for deployment.

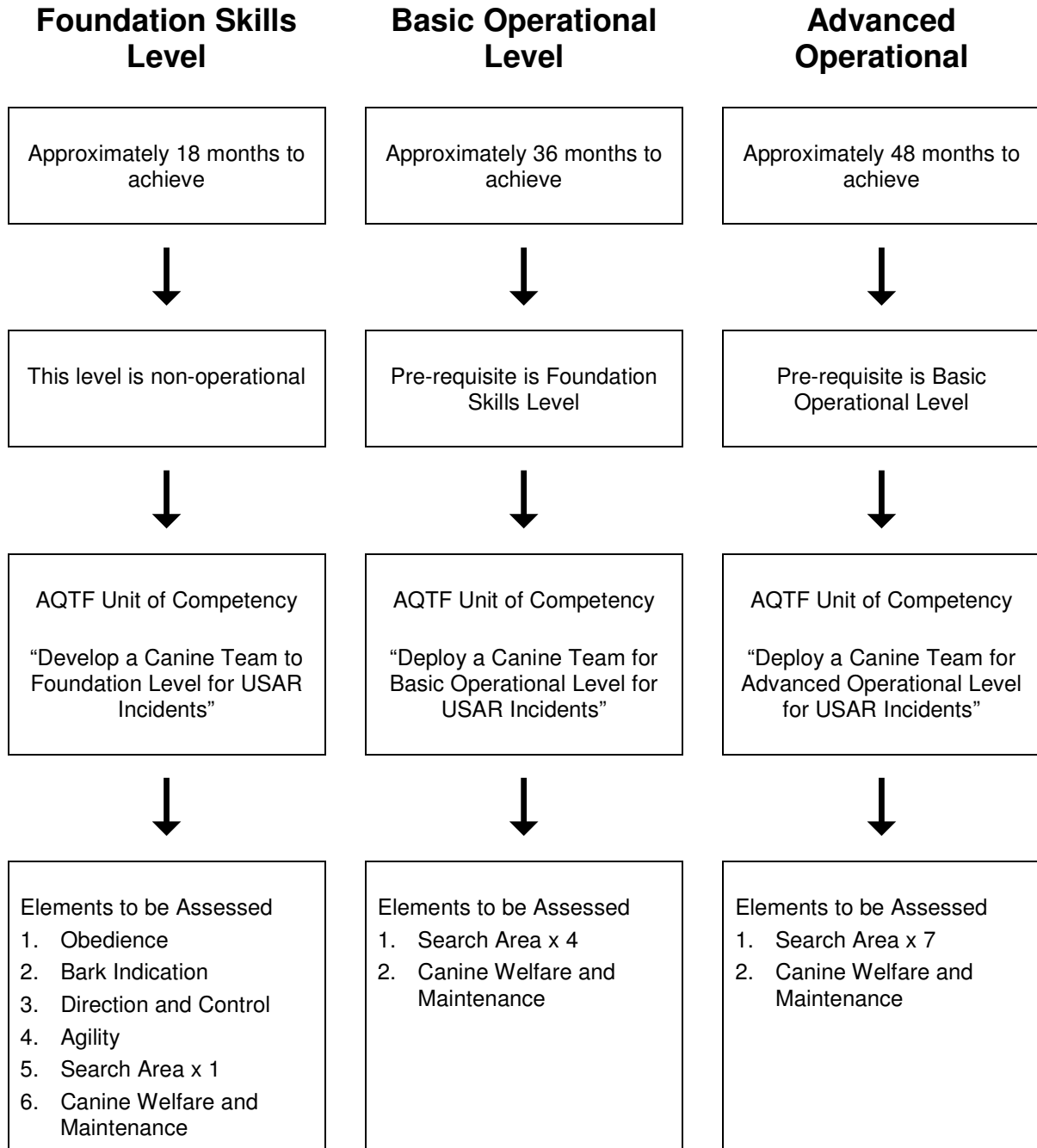
A revision of this guideline requires consultation between the jurisdictions and the NUSARWG. It is anticipated that this guideline should be reviewed at the latest by the end of 2010 to ensure it's relevance to both the Australian and international canine search capability requirements.

The following diagram provides a visual representation of the transitional period.





## Australian USAR Canine Capability Operational Framework



## Pre-Requisites

	<b>Basic Operational</b>	<b>Advanced Operational</b>
<b>Canine search specialist</b>	<p>To be eligible to undertake the basic operational assessment, the canine search specialist must be at least 18 years of age.</p> <p>The canine search specialist must hold the following qualifications and endorsements:</p> <ul style="list-style-type: none"> <li>• USAR CAT1 Responder</li> <li>• USAR Taskforce Specialist Course</li> <li>• Current Senior First Aid Certificate</li> <li>• Select and Maintain a Canine Team for USAR Incidents</li> <li>• Develop Training Techniques for a USAR canine search specialist</li> <li>• Train a Canine Team for Searching USAR Environments</li> <li>• Develop a Canine Team to Foundation Level for USAR Incidents</li> </ul> <p>After successfully completing the basic operational assessment a statement of attainment for “Deploy a Canine Team for Basic Operational Level” for USAR Incidents will be issued.</p> <p><b><u>For Domestic Deployment</u></b> The canine search specialist must meet the vaccination requirements specified by their jurisdictional task force for domestic deployment.</p> <p><b><u>For International Deployment</u></b> The canine search specialist must meet the vaccination requirements specified by their jurisdictional task force for international deployment and maintain a valid passport with a minimum of 6 months duration before expiry.</p>	<p>To be eligible to undertake the advanced operational assessment, the canine search specialist and canine are to be operational at basic level, and have been operational at this level for a minimum of six (6) months preceding the advanced operational assessment.</p> <p>The canine search specialist must hold the following qualifications and endorsements:</p> <ul style="list-style-type: none"> <li>• As per basic operational Level</li> <li>• Successful completion of basic operational Level</li> </ul> <p>After successfully completing the advanced operational assessment a statement of attainment for “Deploy a Canine Team for Advanced Operational Level for USAR Incidents” will be issued.</p> <p><b><u>For Domestic Deployment</u></b> The canine search specialist must meet the vaccination requirements specified by their jurisdictional task force for domestic deployment.</p> <p><b><u>For International Deployment</u></b> The canine search specialist must meet the vaccination requirements specified by their jurisdictional task force for international deployment and maintain a valid passport with a minimum of 6 months duration before expiry.</p>

	<b>Basic Operational</b>	<b>Advanced Operational</b>
<b>Disaster search canine</b>	<p>The disaster search canine shall be a minimum of 18 months old and comply with the aggression policy.</p> <p>Has been successfully assessed at the foundation skills assessment level (“Develop a Canine Team to Foundation Level for USAR Incidents”).</p> <p>The canine shall have implanted a microchip as per the INSARAG guidelines.</p> <p><b><u>For Domestic Deployment</u></b> The canine shall be registered with a local authority and hold a current vaccination certificate for at least; canine distemper, infectious canine hepatitis, canine parvovirus, canine parainfluenza and bordetella bronchiseptica (kennel cough).</p> <p><b><u>For International Deployment</u></b> The canine shall be registered with a local authority and hold a current vaccination certificate for at least; canine distemper, infectious canine hepatitis, canine parvovirus, canine parainfluenza, bordetella bronchiseptica (kennel cough), leptosporosis and rabies. AQIS recommends for the rapid deployment of USAR canines returning to Australia the canine should undertake a Rabies Neutralising Antibody Titre test (RNATT) annually.</p> <p>Additional AQIS region specific requirements can be sourced from <a href="http://www.daffa.gov.au/aqis/cat-dogs">http://www.daffa.gov.au/aqis/cat-dogs</a></p>	<p>The disaster search canine shall be a minimum of 24 months old, comply with the aggression policy and must also have been successfully assessed at basic operational level.</p> <p>The canine shall have implanted a microchip as per the INSARAG guidelines.</p> <p><b><u>For Domestic Deployment</u></b> The canine shall be registered with a local authority and hold a current vaccination certificate for at least; canine distemper, infectious canine hepatitis, canine parvovirus, canine parainfluenza and bordetella bronchiseptica (kennel cough).</p> <p><b><u>For International Deployment</u></b> The canine shall be registered with a local authority and hold a current vaccination certificate for at least; canine distemper, infectious canine hepatitis, canine parvovirus, canine parainfluenza, bordetella bronchiseptica (kennel cough), leptosporosis and rabies. AQIS recommends for the rapid deployment of USAR canines returning to Australia the canine should undertake a Rabies Neutralising Antibody Titre test (RNATT) annually.</p> <p>Additional AQIS region specific requirements can be sourced from <a href="http://www.daffa.gov.au/aqis/cat-dogs">http://www.daffa.gov.au/aqis/cat-dogs</a></p>

<p><b>Assessors</b></p>	<p><b><u>Assessor – Basic Operational</u></b>                  All Assessors shall meet the following requirements:</p> <ul style="list-style-type: none"> <li>• Must be a canine search specialist within a task force that has membership on the NUSARWG</li> <li>• Three years minimum experience as a disaster search canine specialist</li> <li>• Has achieved basic operational level as a canine search specialist</li> <li>• Shadow evaluate at least two basic operational assessments and observe a total of at least 10 teams</li> <li>• Conduct a basic operational assessment under the supervision of a fully qualified assessor</li> <li>• Subject to skills maintenance</li> <li>• Successful completion and assessment of the following AQTF units of competency (or equivalent BSZ)                         <ul style="list-style-type: none"> <li>○ TAAASS401B Plan and organise assessment</li> <li>○ TAAASS402B Assess competence</li> <li>○ TAAASS404B Participate in Assessment Validation</li> </ul> </li> </ul> <p><b><u>Lead Assessor – Basic Operational</u></b>                  To act as lead assessor, an assessor must have already served as a USAR canine search assessor on at least three earlier basic operational assessments.</p>	<p><b><u>Assessor – Advanced Operational</u></b>                  All Assessors shall meet the following requirements:</p> <ul style="list-style-type: none"> <li>• Must be a canine search specialist within a task force that has membership on the NUSARWG</li> <li>• Five years minimum experience as a Disaster Search canine search specialist</li> <li>• Shadow evaluate at least two advanced operational assessments and observe a total of at least 10 teams</li> <li>• Conduct an advanced operational assessment under the supervision of a fully qualified assessor</li> <li>• Subject to skills maintenance</li> <li>• Successful completion and assessment of the following AQTF units of competency (or equivalent BSZ)                         <ul style="list-style-type: none"> <li>○ TAAASS401B Plan and organise assessment</li> <li>○ TAAASS402B Assess competence</li> <li>○ TAAASS404B Participate in Assessment Validation</li> </ul> </li> </ul> <p><b><u>Lead Assessor – Advanced Operational</u></b>                  To act as lead assessor, an assessor must have already served as a USAR canine search assessor on at least three earlier advanced operational assessments.</p>
<p><b>Veterinary Advisor</b></p>	<p>Veterinary advisors shall hold current registration as a Veterinary Surgeon with the Australian Veterinary Association.</p>	<p>Veterinary advisors shall hold current registration as a Veterinary Surgeon with the Australian Veterinary Association.</p>

## ***Application for Assessment***

Canine search teams that wish to be assessed must forward their application form to the focal point for their jurisdictional task force.

Application forms are available from the rear of this guideline.

To be considered for assessment the application must be received no less than eight weeks before the date of the scheduled assessment. Receipt of a valid application does not guarantee that an assessment will be offered. Additional information regarding the canine search specialist/canine may be sought, particularly if it has been assessed several times unsuccessfully.

## ***Operational Status (Certification)***

Canine search specialists that pass the basic or advanced operational and associated unit of competency will become certified for use in events requiring a USAR canine search team.

It is the responsibility of the certified canine search specialist to notify the task force of which they are a member of any change in their operational status.

## Skills Maintenance and Re-Certification

All canines certified and deemed operational under this guideline are subject to the following skills maintenance and re-certification requirements.

All canine search specialists are responsible for maintaining their canine's skills and performance between assessments up to or beyond the basic or advanced guideline (as applicable). If the canine search specialist believes that their canine has fallen below the required guideline it is his/her responsibility to notify the focal point for the jurisdictional task force.

All canine search specialists shall have a personal training/operational logbook that is formatted as per the guideline logbook designed by the NUSARWG Canine Technical Sub-Committee. The logbook will be provided to canine search teams by the jurisdictions.

### ***Canine Search Teams***

In addition to successfully completing the re-certification assessments canine search specialists and their canines are required to maintain currency of their competency. Currency is defined as successfully undertaking the assessment requirements of the Develop a Canine Team to Foundation Level for USAR Incidents unit of competency annually. The following re-certification requirements apply;

#### **Basic Operational Level**

Having passed the basic operational assessment, a canine and canine search specialist will retain their certification for two years. After this time the canine and canine search specialist must be re-certified by undertaking another basic operational level assessment. For practical purposes a 90 day grace period is allowed after the year end for the canine and canine search specialist to attend this assessment before they actually lose their operational status.

#### **Advanced Operational Level**

Having passed the advanced operational assessment, a canine and canine search specialist will retain their certification for three years. After this time the canine and canine search specialist must be re-certified by undertaking another advanced level assessment. For practical purposes a 90 day grace period is allowed after the year end for the canine and canine search specialist to attend this assessment before they actually lose their operational status.

#### **Canine Ten Years and Older**

Canine search specialists with a canine that is ten years of age or older must be re-certified annually.

#### ***For the Advanced Operational Assessment Only***

In the event of a team being assessed as not yet competent on Element One (Search Work) the assessors will determine whether the team is still performing to the level of basic operational certification. If so, the team will maintain basic operational certification. If not, the team will be considered non-operational and will need to pass the basic operational assessment again before being considered for advanced operational assessment.

## **Assessors**

To maintain status as an assessor the following is required:

- Assess or shadow assess at least one assessment every two years at the level to which they are endorsed
- Attend twice yearly assessor conference calls

# Aggression

## Definition

Canine aggression is an attempted or actual unprovoked attack on another canine or person. A canine may also be evaluated as aggressive if it exhibits significant warning signs of imminent unprovoked attack (continuous growling, snarling, fear barking, etc.).

## Aggression Policy

Each canine search specialist shall be responsible for ensuring that aggressive behaviour by their canine is modified. An aggressive canine shall not be eligible to participate in assessments or operations.

A canine must be able to tolerate other canines off lead whilst under canine search specialist supervision, without showing aggression.

A canine must allow another canine search specialist from within the task force to move it to a different location in the absence of its own canine search specialist without showing aggression.

## Aggression Repercussions

In the event a canine demonstrates aggressive behavior at any event (training or operational), the following procedures will be followed:

- **Canine attacks a person:**
  - Upon an unprovoked attack, the canine must be removed from the event by its canine search specialist and will not be allowed to participate in any future events pending an investigation by the task force leader.
- **Canine attacks another canine:**
  - **Short term** — at an event, a review of the aggressive incident must take place immediately amongst the canine search team. The canine search team will make a recommendation to the assessor/host regarding the ongoing participation of that canine. If it is an isolated incident, the host/assessor based on the recommendation of the canine search team may choose to allow the canine to continue.
  - **Long term** — if this is determined to be a standard behavior, the canine search specialist will be advised that this canine is unacceptable to the task force and will not be allowed to participate in future events.
  - **Reinstatement policy** — a sponsoring agency may petition its jurisdiction to have a canine re-assessed upon documentation that behaviour modification has been successful.

## **Code of Conduct**

- All participants in the canine search team certification process must abide by the USAR Code of Conduct for Canine Teams
- Violation of the Code of Conduct may result in loss of certification, loss of assessor status, and/or referral to appropriate authorities.
- For full details of the Code of Conduct, please refer to Appendices.



## Appeals

This appeals procedure applies to both assessment and re-certification.

In the first instance the canine search specialist shall make an appeal to the lead assessor within seven days of the assessment. Or where appropriate in accordance with the issuing registered training organisation's appeal policy. Ideally, the canine search specialist shall raise any issues at the time of assessment and then discuss within the feedback session.

If the appeal is unresolved with the lead assessor, the canine search specialist can make an appeal in writing to the jurisdictional task force leader within thirty days of the assessor's appeal decision.

The jurisdictional task force leader shall then convene an appeals panel consisting of:

- NUSARWG Member for the jurisdiction
- Lead assessor
- Independent lead assessor

Such panel members shall not hold multiple positions within the panel.

International experts may also be co-opted onto the appeals panel.

The appeal panel's decision shall be final and binding.

Appeals outside this procedure shall not be entertained.

## Assessment Procedures

The assessors for each assessment are to be taken from a pool of assessors appointed by the jurisdiction and are endorsed by the same.

### Assessment Panel Requirements

	Basic Operational	Advanced Operational
Assessors	<p>Each basic operational assessment must be assessed by a panel consisting of at least two assessors.</p> <p>Before each assessment one of the assessors must be chosen to take the role of lead assessor.</p>	<p>Each advanced operational assessment must be assessed by a panel consisting of at least two assessors.</p> <p>Before each assessment one of the assessors must be chosen to take the role of lead assessor.</p>
Veterinary Advisor	<p>A veterinary advisor shall also be appointed. The veterinary advisor shall evaluate the element in relation to canine welfare and maintenance and provide veterinary support throughout the assessment.</p>	<p>A veterinary advisor shall also be appointed. The veterinary advisor shall evaluate the element in relation to canine welfare and maintenance and provide veterinary support throughout the assessment.</p>

Please note in the transitional period as described on page 8, **Effective Date and Revision**, initially not all pre-requisites for each assessor may be met. In this instance, the decision to proceed with an assessor will be made by the NUSARWG Canine Technical Sub-Committee. It is envisaged that by end 2012 all requirements will be able to be met by assessors.

## ***Lead Assessor Roles and Responsibilities***

- Ensure that participants meet the pre-requisite requirements for the assessment to be undertaken. The final decision for inclusion or exclusion of participants from assessment rests with the lead assessor.
- On site, plan and test site layout and brief other assessors and other site personnel regarding; site set-up and suitability, timelines, assessment order, protocols, and other matters related to the assessment.
- Coordinate with task force leader who will be in charge of concerns regarding; site safety, transportation, site control, procurement, briefing and transport of victims, and other matters related to logistics.
- Coordinate with other assessors and safety officer to; make final selection, approval, and pre-testing of selected victim placement holes.
- Ensure that the safety equipment check list (required PPE) is completed prior to entering test site.
- Ensure that all assessors adhere to established testing procedures.
- Ensure that all paperwork is complete and consistent.
- Complete assessment report and forward to focal point for jurisdictional taskforce canine capability
- Provide feedback to canine search team
- Responsible for a consensus of competent/not yet competent from all assessors
- Ensure victims have been briefed properly
- Ensures safety officer knows his role:
  - where to stand on pile
  - when to check on victims
  - remove barrier tape
- Ensure that medical and veterinarian capabilities are available.

## Ground Rules

### The following rules apply to all Assessments (Basic and Advanced):

1. A reward is allowed on the rubble.
2. No collars, leads or search vests to be worn whilst undertaking search work.
3. Muzzles are not permitted in any phase of the assessment process.
4. No prong or electronic collars.
5. No practice on any element before the assessment.
6. The canine search specialist must maintain continual control of the canine.
7. The canine search specialist is responsible for the care and safety of the canine at all times. Abuse (physical, verbal, etc.) of the canine is not acceptable at any time.
8. Safety procedures must be followed. The canine search specialist is required to wear personal protective equipment appropriate to the risk assessed on the assessment site in consultation with the safety officer.
9. Aggression will not be tolerated at any time.
10. Any accident/emergency shall be reported immediately to an assessor or safety officer.
11. Canines shall be toileted before assessment.
12. The canine search specialists must not carry a phone or pager during the search element.
13. Food must not be dropped on the rubble pile by any canine search specialist.
14. Female dogs in season are not permitted to participate in an assessment.

## **Assessment Procedure**

1. The assessors shall determine the testing area.
2. A safety officer must be present at all times.
3. Rescue and medical capabilities must be readily available.
4. Only one canine search specialist shall be assessed at a time.
5. For the advanced operational assessment (with the exception of the mandatory three consecutive search areas), for the purpose of assessment efficiency the assessors may have all canines complete one search area before moving onto the next search area.
6. The canine search specialist must report to the assessors as directed.
7. The assessment will consist of two elements (Search Work and Canine Welfare & Maintenance)
8. At least two approved assessors shall conduct the assessment of every element. For element two the veterinary advisor is to be the assessor.
9. The lead assessor shall moderate any dispute over assessment.
10. Competence must be achieved in all elements to achieve certification.
11. Media, VIPs and other observers may be present at assessments and although efforts will be made to reduce unnecessary distractions, the presence of distractions is an operational reality.
12. At the end of the assessments, assessors will meet and form a decision.
13. An individual debrief shall be given to each canine search specialist.
14. In the event of a not yet competent decision, the team must wait for the next scheduled assessment to be re-assessed.
15. Assessment shall be conducted consistent with Develop a Canine Team to Basic Operational Level for USAR Incidents for basic operational assessments and Deploy a Canine Team to Advanced Operational Level for USAR Incidents for advanced operational assessments.
16. At the completion of three not yet competent assessments, the participant will be referred to the not yet competent process outlined in the Appendices.

## **Timing**

### **Basic Operational**

The assessment for a participant will be conducted within a twenty-four hour time period

There may be either day time or night time components

There must be a minimum of four searches of duration of twenty minutes each search:

- Two searches must be undertaken consecutively
- Where searches are undertaken consecutively, canine teams will rest between ten and twenty minutes between each search. This time factor may require adjustment upwards due to extreme weather temperatures (high or low temperatures).

Due to the current lack of appropriate assessment facilities four searches can be conducted over two areas. That is, both of the search areas can be used twice during the assessment.

### **Advanced Operational**

The assessment for a participant will be conducted within a thirty-six hour time period.

There must be both day time and night time components.

There must be a minimum of seven searches of duration of twenty minutes each search:

- Searches will be undertaken over a minimum of two separate search site locations
- Three searches must be undertaken consecutively at one search site location
- A minimum of two of the remaining four searches must be conducted at a separate search site location
- Where searches are undertaken consecutively, canine teams will rest between ten and twenty minutes between each search. This time factor may require adjustment upwards due to extreme weather temperatures (high or low temperatures)
- Minimum of one search will be done in the dark at night; the use of artificial light is advisable.

## ***Element One- Search Work (Basic Operational)***

### **Rationale**

The canine search team must be capable of working together in disaster search operations to locate victims. The canine search specialist will be evaluated on his/her ability to function as a canine search specialist. The canine must be capable of searching independently and efficiently, as directed by the canine search specialist.

### **Assessment Completion**

Assessment completion will be based on the performance criteria and assessment form guidelines, including the requirements of locating six of the seven victims and having no more than one false alert.

### **Performance Criteria and Assessment Form Guidelines**

The assessors shall consider the following list of key skills in determining the team's success for each of the elements.

#### **Ground Rules**

- Canine search specialist is required to follow all ground rules

#### **Interview and Planning**

- Site assessment/interview
- Establish an initial search strategy

#### **Handling and Control**

- Directs away from canine search specialist on command
- Ranges out of sight
- Maintains control of canine (as example, be able to redirect or recall the canine, or order an emergency stop to ensure focus and safety)

#### **Searching**

- Searches independently
- Demonstrates appropriate care/safety/welfare for canine search specialist and canine
- Covers search site
- Search drive/eagerness/willingness to work
- Team interaction and observation between the canine and canine search specialist

#### **Indication**

- Canine demonstrates commitment to scent source
- Canine indicates independent of canine search specialist
- Focused bark indicating live human scent
- Canine search specialist correctly identifies to the assessor the area of indication of live human scent

#### **Debriefing Process**

- Site sketch skills
- Follow-up search recommendations

### **Canine Search Specialist Information**

- To successfully complete the assessment, the team must cover each search site, locate six of the seven victims and have no more than one false alert, and pass the performance criteria and assessment guidelines.
- Canine search specialist shall establish scene safety. This interview will include the following:
  - 1) Define my search area
  - 2) What time did the structure collapse?
  - 3) What type of occupancy was the structure (school, office, apartment, building, etc)?
  - 4) What is the number of suspected missing?
  - 5) Has the structure been searched before?
  - 6) Has a structural engineer checked the building?
    - a) What are the findings?
  - 7) Is it safe to enter?
  - 8) Are blueprints available?
  - 9) Has HAZMAT checked the area?
    - a) What are the findings?
  - 10) Has the gas been isolated?
    - a) How and by whom?
  - 11) Has the electricity been isolated?
    - a) How and by whom?
  - 12) Has the water/sewer been isolated?
  - 13) Is heavy rescue available?
  - 14) Is medical available?
  - 15) Is there a veterinarian available?

### **Course Construction**

- There will be a minimum of two separate search areas. Each search area can be used twice
- Each search area will consist of an area 500 – 2000 sq. metres with a minimum height of 2.5 metres at the highest spot
- One of the search areas must have a minimum difference in level of 1.5 metres
- The intention is to provide criteria to adjust the footprint of the pile based on the complexity and height, with more complex rubble reduced in area and less complex rubble increased in area. Where possible the rubble debris should consist of concrete, wood, mixed material, partially or completely collapsed structures. A structure that meets the above criteria and consistent with a disaster scene can be used as one of the four search areas. Barrier tape is to be used to reduce or delineate separate search areas when larger search sites are being used.
- One or more search areas will be contaminated with distractions: This may include, but not limited to; machinery, tools, personnel, noise, smoke, food (should be hidden carefully and inaccessible to the canine).
- There should be noise distractions such as running generators, machinery, rescue tools, etc.



### **Victim Placement**

- There will be a total of seven victims. They shall be placed at least twenty minutes before the assessment begins. There will be from one to three concealed victims in each search area. When placing victims there should be a minimum distance of ten metres between them.
- The victims shall be well concealed from both canine search specialist and canine.
- The hiding areas should be carefully constructed to prevent small/large canines from accessing the victim.
- There will be several false victim locations constructed.
- All victims will have a radio with an earpiece (if available), and should be monitored on a constant basis.

### **Search Procedures**

- The four search areas will have different accessibility to the canine search specialist.
  - One search area is completely accessible to the canine search specialist.
  - One search area will provide access to the perimeter and high point of the area to gain a visual overview of the entire area. The canine search specialist may enter the search area to mark an alert and restart the canine. After restarting the canine, the canine search specialist must return to the perimeter or high point.
  - One search area will provide access to only one well-marked portion of the perimeter. The canine must search the area out of the canine search specialist's sight in order to locate the victim(s). The canine search specialist may access the rubble to indicate the alert location and restart the canine. The canine search specialist may remain within a 1.5 metre radius of the alert location or return to the perimeter while the canine continues to search for victims.
  - The remaining search area will be set up at the discretion of the assessment panel.
- Up to five minutes briefing will be provided at each area.
- The team has twenty minutes to search each area after the completion of the briefing.
- The canine search specialist will be given up to ten minutes to provide a site sketch and debrief on one search area only. The search area selected will be at the discretion of the assessor, the canine search specialist will not be informed of area selected prior to commencing the search. When a site sketch is required, the canine search specialist will be asked to provide the sketch immediately following the search it is required for. The canine search specialist shall make a site sketch indicating alerts, prominent features and compass orientation (e.g. N).
- The team will be allowed at least a ten minute rest period (plus any relocation time, if necessary) between each search area. Note: For assessment purposes all canines being assessed may be assessed on the first search area before moving on to second search area and so on. This will be explained to candidate at the start of the assessment process.

## ***Element One- Search Work (Advanced Operational)***

### **Rationale**

The canine search team must be capable of working together in disaster search operations to locate victims. The canine search specialist will be evaluated on his/her ability to function as a canine search specialist. The canine must be capable of searching independently and efficiently, as directed by the canine search specialist.

### **Assessment Completion**

Assessment completion will be based on the performance criteria and assessment form guidelines, including the requirements of locating a minimum twelve of fourteen victims and having no more than one false alert.

Should an assessment panel choose to increase the number of victims placed for the assessment, the guidelines for ratios of victims placed, to victims missed and false alerts allowed, must abide by the INSARAG guidelines.

### **Performance Criteria and Assessment Form Guidelines**

The assessors shall consider the following list of key skills in determining the team's success for each of the elements.

#### **Ground Rules**

- Canine search specialist is required to follow all ground rules

#### **Interview and Planning**

- Site assessment/interview
- Establish an initial search strategy

#### **Handling and Control**

- Canine directs away from canine search specialist on command
- Ranges out of sight
- Canine search specialist maintains control of canine (as example, be able to redirect or recall the canine, or order an emergency stop to ensure focus and safety)

#### **Searching**

- Searches independently
- Demonstrates appropriate care/safety/welfare for canine search specialist and canine
- Covers search site
- Search drive/eagerness/willingness to work
- Team interaction and observation between the canine and canine search specialist

#### **Indication**

- Demonstrates commitment to scent source
- Canine indicates independent of canine search specialist
- Focused bark indicating live human scent
- Correctly identifies to the assessor the area of indication of live human scent

#### **Debriefing Process**

- Site sketch skills
- Follow-up search recommendations

### **Canine Search Specialist Information**

- To successfully complete the assessment, the team must cover each search site, locate twelve of the fourteen victims and have no more than one false alert, and pass the performance criteria and assessment guidelines.
- Canine search specialist shall establish scene safety. This interview will include the following:
  - 1) Define my search area
  - 2) What time did the structure collapse?
  - 3) What type of occupancy was the structure (school, office, apartment, building, etc)?
  - 4) What is the number of suspected missing?
  - 5) Has the structure been searched before?
  - 6) Has a structural engineer checked the building?
    - a) What are the findings?
  - 7) Is it safe to enter?
  - 8) Are blueprints available?
  - 9) Has HAZMAT checked the area?
    - a) What are the findings?
  - 10) Has the Gas been isolated?
    - a) How and by whom?
  - 11) Has the electricity been isolated?
    - a) How and by whom?
  - 12) Has the water/sewer been isolated?
  - 13) Is heavy rescue available?
  - 14) Is medical available?
  - 15) Is there a veterinarian available?

### **Course Construction**

- Searches will be undertaken over a minimum of two separate search site locations
- Each search area will consist of an area 500 – 2000 sq. metres with a minimum height of 2.5 metres at the highest spot
- One of the search areas must have a minimum difference in level of 1.5 metres
- The intention is to provide criteria to adjust the footprint of the pile based on the complexity and height, with more complex rubble reduced in area and less complex rubble increased in area. Where possible the rubble debris should consist of concrete, wood, mixed material, partially or completely collapsed structures. A structure that meets the above criteria and consistent with a disaster scene can be used as one of the seven search areas. Barrier tape is to be used to reduce or delineate separate search areas when larger search sites are being used.
- One or more search areas will be contaminated with distractions: This may include, but not limited to; machinery, tools, personnel, noise, smoke, food (should be hidden carefully and inaccessible to the canine).
- There should be noise distractions such as running generators, machinery, rescue tools, etc.

### **Victim Placement**

- There will be a minimum of fourteen victims. They shall be placed at least twenty minutes before the assessment begins. There will be from zero to four concealed victims in each search area. When placing victims there should be a minimum distance of ten metres between them.
- Only one area can have zero victims
- The victims shall be well concealed from both canine search specialist and canine.
- The hiding areas should be carefully constructed to prevent small/large canines from accessing the victim.
- There will be several false victim locations constructed.
- All victims will have a radio with an earpiece (if available), and should be monitored on a constant basis.

### **Search Procedures**

- Searches must be undertaken as follows;
  - Three searches must be undertaken consecutively at one search site location
  - A minimum of two of the remaining four searches must be conducted at a separate search site location
  - Where searches are undertaken consecutively, canine teams will rest between ten and twenty minutes between each search. This time factor may require adjustment upwards due to extreme weather temperatures (high or low temperatures)
  - Minimum of one search will be done in the dark at night; the use of artificial light is advisable
- The seven search areas will have different accessibility to the canine search specialist.
  - One area is completely accessible to the canine search specialist.
  - One area will provide access to the perimeter and high point of the area to gain a visual overview of the entire area. The canine search specialist may enter the area to mark an alert and restart the canine. After restarting the canine, the canine search specialist must return to the perimeter or high point.
  - One area will provide access to only one well-marked portion of the perimeter. The canine must search the area out of the canine search specialist's sight in order to locate the victim(s). The canine search specialist may access the rubble to mark the alert location and restart the canine. The canine search specialist may remain within a 1.5 metre radius of the alert location or return to the perimeter while the canine continues to search for victims.
  - The remaining areas will be set up at the discretion of the assessment panel
- Up to five minutes briefing will be provided at each area
- The team has twenty minutes to search each area after the completion of the briefing.
- The canine search specialist will be given up to ten minutes to provide a site sketch and debrief on one search area only. The search area selected will be at the discretion of the assessor, the canine search specialist will not be informed of area selected prior to commencing the search. When a site sketch is required, the canine search specialist will be asked to provide the sketch immediately following the search it is required for. The canine search specialist shall make a site sketch indicating alerts, prominent features and compass orientation (ie N).
- The team will be allowed at least a ten minute rest period (plus any relocation time, if necessary) between each search area. Note: For assessment purposes all canines being assessed may be assessed on the first search area before moving on to second search area and so on. This will be explained to candidate at the start of the assessment process.

## **Element Two – Canine Welfare and Maintenance**

### **Rationale**

- Disaster sites pose particular risks to search canines that may affect their welfare and performance. Feet may be injured or contaminated by the surfaces canines are working on. Dust and other contaminants may accumulate in the canine's eyes, interfering with scenting ability and sight. Canine search specialists must be aware of these hazards and be able to minimise their effects.

### **Required Skills**

- Canine search specialist can examine pads, webbing, toes and nails of canine and treat minor injuries and contamination.
- Canine search specialist and canine are able to demonstrate performing irrigation of the canine's eyes in an appropriate manner.

### **Assessment**

- Veterinary Advisor (Vet) asks canine search specialist to examine feet of canine, and describe what canine search specialist is checking for and how they would treat the condition. Examination should include pads, webbing, nails and bones of foot, and potential conditions should include (but not be limited to) cuts, abrasions, foreign bodies, torn nails, fractures and sprains, and irritant substances.
- Canine search specialist irrigates eyes with sterile saline in a competent manner.

## **Appendices**



Australian Government  
Attorney-General's Department

## Application for Assessment - Basic Operational Level

Date of Application: .....

**NOTE: Before making an application for assessment please ensure that both the canine search specialist and canine meet the pre-requisite requirements listed below;**

Canine search specialist

- At least 18 years of age.
- Have USAR CAT1 Responder
- USAR Taskforce Specialist Course
- Current Senior First Aid Certificate
- Develop a Canine Team to Foundation Level for USAR Incidents
- Current vaccination certificates relevant to either domestic or international deployment.

Canine

- A minimum of 18 months old and comply with the aggression policy.
- Has been successfully assessed against Develop a Canine Team to Foundation Level for USAR Incidents
- Have an implanted microchip as per the INSARAG guidelines.
- Registered with a local authority
- Current vaccination certificates relevant to either domestic or international deployment.

Documents to attach with application

- |  |   |
|--|---|
| <ul style="list-style-type: none"> <li><input type="checkbox"/> Verified Proof of age for both canine search specialist and canine</li> <li><input type="checkbox"/> Statements of attainment for the following                             <ul style="list-style-type: none"> <li>▪ Current Senior First Aid Certificate</li> <li>▪ Develop a Canine Team to Foundation Level for USAR Incidents</li> </ul> </li> </ul> | <ul style="list-style-type: none"> <li><input type="checkbox"/> Certificate of completion for the following                             <ul style="list-style-type: none"> <li>▪ USAR CAT1 Responder</li> <li>▪ USAR Taskforce Specialist Course</li> </ul> </li> <li><input type="checkbox"/> Immunisation records for canine</li> <li><input type="checkbox"/> Immunisation records for canine search specialist</li> <li><input type="checkbox"/> Canine registration details (i.e. with local council)</li> <li><input type="checkbox"/> Proof of micro-chipping of canine</li> </ul> |
|--|---|

**CANINE SEARCH SPECIALIST INFORMATION**

First Name: ..... Last name: .....

Address: .....

Suburb: ..... Postcode: ..... State: .....

Phone number (Day): ..... Phone number (A.H.): .....

Mobile Number: .....

Email address: .....

**Emergency Contact**

First Name: ..... Last name: .....

Address: .....

Suburb: ..... Postcode: ..... State: .....

Phone number (Day): ..... Phone number (A.H.): .....

Mobile Number: .....

**CANINE INFORMATION**

Name: ..... Date of Birth: .....

Breed: ..... Gender:  Male  Female

Microchip Number: .....

Has this canine been assessed before with another canine search specialist?  Yes  No  
If yes please give details as follows:

Date of Assessment: ..... Assessment Undertaken:  Foundation Level  Basic Operational  Advanced Operational

Canine search specialist Name: ..... Training Org: .....

Will this canine resource be made available for deployment outside of Australia?  Yes  No

**Immunisations** (please ensure you also attach copies of immunisation records)

<u>Type</u>	<u>Date of last Vaccination</u>
Canine distemper	.....
Infectious canine hepatitis	.....
Canine parvovirus	.....
Canine parainfluenza	.....
Bordetella bronchiseptica (kennel cough).	.....

**Applicable only for Deployment Outside of Australia**

Leptosporosis	.....
Rabies	.....
Rabies Neutralising Antibody Titre test (RNATT)	.....

**SPONSORING USAR TASKFORCE DETAILS**

QFRS  NSW DART  FESA  ACTFB  MFB  SAUSAR  NTFB  TFS

**Canine Focal Point Name:**.....

Office number:..... Mobile Number: .....

Email address:.....

Address:.....

Suburb: ..... Postcode ..... State: .....

**Task Force Leader Name:** .....

Office number:..... Mobile Number: .....

Email address:.....

**DECLARATION**

My canine and I are physically sound and currently have no restrictions or medical conditions that may prevent us from meeting the requirements of the assessment. I understand and accept that the assessor's decisions are final and binding. I agree to the terms and conditions of the Australian Urban Search & Rescue Canine Capability Best Practice Guideline: Basic Operational Assessment Procedure.

Name: ..... Date:.....

Signature: .....

**SPONSORING JURISDICTION ENDORSEMENT**

The above canine team complies with the Australian Urban Search & Rescue Canine Capability Best Practice Guideline: Basic Operational Level. The above canine team has completed the aggression test meets all pre-requisites and is considered ready to participate in the Basic Operational Assessment Procedure.

Name: ..... Date:.....

Signature: .....

Office Use Only:

Date Application Received: ..... Application Approved for Assessment  Yes  No

Applicant Notified:  Yes  No Assessment Date: .....





## Application for Assessment - Advanced Operational Level

Date of Application: .....

**NOTE: Before making an application for assessment please ensure that both the canine search specialist and canine meet the pre-requisite requirements listed below;**

Canine search specialist

- At least 18 years of age.
- Have USAR CAT1 Responder
- USAR Taskforce Specialist Course
- Current Senior First Aid Certificate
- Deploy a Canine team for Basic Operational Level for USAR Incidents
- Current vaccination certificates relevant to either domestic or international deployment.

Canine

- A minimum of 18 months old and comply with the aggression policy.
- Has been successfully assessed against Deploy a Canine team for Basic Operational Level for USAR Incidents
- Have an implanted microchip as per the INSARAG guidelines.
- Registered with a local authority
- Current vaccination certificates relevant to either domestic or international deployment.

Documents to attach with application

- |   |   |
|---|---|
| <ul style="list-style-type: none"> <li><input type="checkbox"/> Verified Proof of age for both canine search specialist and canine</li> <li><input type="checkbox"/> Statements of attainment for the following                             <ul style="list-style-type: none"> <li>▪ Current Senior First Aid Certificate</li> <li>▪ Deploy a Canine team for Basic Operational Level for USAR Incidents</li> </ul> </li> </ul> | <ul style="list-style-type: none"> <li><input type="checkbox"/> Certificate of completion for the following                             <ul style="list-style-type: none"> <li>▪ USAR CAT1 Responder</li> <li>▪ USAR Taskforce Specialist Course</li> </ul> </li> <li><input type="checkbox"/> Immunisation records for canine</li> <li><input type="checkbox"/> Immunisation records for canine search specialist</li> <li><input type="checkbox"/> Canine registration details (i.e. with local council)</li> <li><input type="checkbox"/> Proof of micro-chipping of canine</li> </ul> |
|---|---|

**CANINE SEARCH SPECIALIST INFORMATION**

First Name: ..... Last name: .....

Address: .....

Suburb: ..... Postcode: ..... State: .....

Phone number (Day): ..... Phone number (A.H.): .....

Mobile Number: .....

Email address: .....

**Emergency Contact**

First Name: ..... Last name: .....

Address: .....

Suburb: ..... Postcode: ..... State: .....

Phone number (Day): ..... Phone number (A.H.): .....

Mobile Number: .....

**CANINE INFORMATION**

Name: ..... Date of Birth: .....

Breed: ..... Gender:  Male  Female

Microchip Number: .....

Has this canine been assessed before with another canine search specialist?  Yes  No  
If yes please give details as follows:

Date of Assessment: ..... Assessment Undertaken:  Foundation Level  Basic Operational  Advanced Operational

Canine search specialist Name: ..... Training Org: .....

Will this canine resource be made available for deployment outside of Australia?  Yes  No

**Immunisations** (please ensure you also attach copies of immunisation records)

<b>Type</b>	<b>Date of last Vaccination</b>
Canine distemper	.....
Infectious canine hepatitis	.....
Canine parvovirus	.....
Canine parainfluenza	.....
Bordetella bronchiseptica (kennel cough).	.....

**Applicable only for Deployment Outside of Australia**

Leptosporosis	.....
Rabies	.....
Rabies Neutralising Antibody Titre test (RNATT)	.....

**SPONSORING USAR TASKFORCE DETAILS**

QFRS  NSW DART  FESA  ACTFB  MFB  SAUSAR  NTFB  TFS

**Canine Focal Point Name:** .....

Office number: ..... Mobile Number: .....

Email address: .....

Address: .....

Suburb: ..... Postcode ..... State: .....

**Task Force Leader Name:** .....

Office number: ..... Mobile Number: .....

Email address: .....

**DECLARATION**

My canine and I are physically sound and currently have no restrictions or medical conditions that may prevent us from meeting the requirements of the assessment. I understand and accept that the assessor's decisions are final and binding. I agree to the terms and conditions of the Australian Urban Search & Rescue Canine Capability Best Practice Guideline: Advanced Operational Assessment Procedure.

Name: ..... Date: .....

Signature: .....

**SPONSORING JURISDICTION ENDORSEMENT**

The above canine team complies with the Australian Urban Search & Rescue Canine Capability Best Practice Guideline: Basic Operational Level. The above canine team has completed the aggression test meets all pre-requisites and is considered ready to participate in the Advanced Operational Assessment Procedure.

Name: ..... Date: .....

Signature: .....

**Office Use Only:**

Date Application Received: ..... Application Approved for Assessment  Yes  No

Applicant Notified:  Yes  No Assessment Date: .....

## **Pre-Assessment Briefing**

Prior to commencing the assessment, please ensure that the following is communicated to the canine team being assessed:

- Does the canine search specialist have water for both themselves and the canine?
- Is the canine search specialist wearing appropriate PPE?
- Explain the configuration of the searches and provide assessment schedule and locations to canine search specialists
- Point out location of facilities (medical treatment, toilets, water, base of operations etc )
- Does the canine or canine search specialist have any medical conditions that may prevent them from participating fully and in a safe manner in the assessment?

### **“Save the Canine” Process**

During the assessment, at any time the canine search specialist or assessor may choose to halt or terminate the assessment if it is clear that the canine is not competent, or is in a position where the canine’s welfare or training regime could significantly be impacted on, the following action can be taken;

- The canine search specialist can advise the assessor that they wish to terminate the assessment and take appropriate actions to prevent impact.

OR

- The assessor can advise the canine search specialist if they identify any issues that may impact the canine’s training/welfare. The assessor can ask if the canine search specialist wishes to voluntarily terminate the assessment. The assessor can advise the canine search specialist of any remedial actions that may prevent impact on the canine’s training and welfare.

### **What assistance can be given to the Canine**

During the assessment the canine search specialist is permitted to assist their canine in the following ways:

- Canine search specialist can help the canine up onto unstable elevated surfaces
- Can intervene to prevent accident or injury to the canine
- Take appropriate breaks, rest and water
- Provide motivation and support where necessary, however during an alert, support and motivation can only be provided after the canine has initiated the bark alert.

### **Circumstances under which the assessment will be terminated by the Assessor**

During the assessment, at any time the assessor may choose to halt or terminate the assessment for the following reasons;

- It is clear that the canine or canine search specialist’s health, safety or welfare is at risk
- Extreme weather conditions that may represent OH&S risks
- Due to accident or injury to canine or canine search specialist

### **Rules for Re-assessment**

If assessment is terminated due to:

- Weather Conditions – assessment can be re-scheduled as soon as is practicable after the extreme weather conditions subside.
- Accident or injury - assessment can be re-scheduled as soon as is practicable after medical clearance has been provided by the vet or doctor nominated by the jurisdiction providing the assessment.
- Canine search team not yet competent – refer to Not Yet Competent Assessment Process

#### *Notes to Lead Assessor*

*For each operational assessment you will need a Microchip scanner and to provide for each assessor;*

#### **Basic Operational Assessment**

*4 Assessment Sheets printed duplex  
1 Scoring sheet  
Clipboard and pen  
Assessment Record Sheet*

#### **Advanced Operational Assessment**

*7 Assessment Sheets printed duplex  
1 Scoring sheet  
Clipboard and pen  
Assessment Record Sheet*

<b>Assessment Sheet – Basic Operational</b> (Deploy a Canine to Basic Operational Level for USAR)		
Name Handler:	Name Canine:	
Name of Assessor:	Microchip Number scanned: <input type="checkbox"/> Yes, Microchip No. _____.	
Sponsoring Jurisdiction: <input type="checkbox"/> QFRS <input type="checkbox"/> NSW DART <input type="checkbox"/> FESA <input type="checkbox"/> ACTFB <input type="checkbox"/> MFB <input type="checkbox"/> SAUSAR <input type="checkbox"/> NTFB <input type="checkbox"/> TFS	Date Assessment:	
Search Start Time:	Search End Time:	Search: <input type="checkbox"/> 1 of 4 <input type="checkbox"/> 2 of 4 <input type="checkbox"/> 3 of 4 <input type="checkbox"/> 4 of 4
		Location of Assessment:

SECTION 1. SEARCH WORK		
CRITERIA	SCORE	COMMENTS
<b>1. Prepare for Search</b>		
1.1 Interview, site assessment, risk assessment and search strategy		
1.2 Defines Search strategy, puts into action / adjusts where appropriate		
<b>2. Handle and Control Canine</b>		
2.1 Handler and canine work together in a safe and appropriate manner		
2.2 Handler is able to maintain control of the canine at all times in presence of distractions		
2.3 Handler provides assistance to canine where appropriate.		
<b>3. Conduct Search</b>		
3.1 Search area is covered effectively		
3.2 Canine demonstrates willingness to work independently		
<b>3.3</b> Search drive		
<b>3.4</b> Agility and obstacles		
<b>4. Provide Search Debriefing</b>		
4.1 Post search information recording and recommendations		
4.2 Sketch of the search area <i>N.B - one only sketch required out of the four searches. Indicate N/A if sketch not required for this search.</i>		

5. Maintain Canine Welfare and Safety.		
5.1 Demonstrates care, safety & welfare for the canine and themselves		
5.2 Canine search specialist is able to demonstrate basic care of the canine in an appropriate manner. <i>N.B - one demonstration only required out of the four searches. Indicate N/A if demonstration not required for this search</i>	<input type="checkbox"/> C <input type="checkbox"/> NYC <input type="checkbox"/> N/A	
Assessment stopped due to breach in care/safety/welfare	<input type="checkbox"/> Yes <input type="checkbox"/> No <b>NOTE: If breach occurs this results in a NYC for the assessment</b>	

SECTION 2.		ALERT WORK			
Victim Number	CANINE		CANINE SEARCH SPECIALIST		Total Each Victim
	Commitment to Scent (A)	Bark Alert (B)	Handler Interprets the Canine (C)	Support and Assistance (D)	
	Score:	Score:	Score:	Score:	
	Score:	Score:	Score:	Score:	
	Score:	Score:	Score:	Score:	
<b>Were there any false alerts?</b> <input type="checkbox"/> Yes <input type="checkbox"/> No No of False Alerts: _____		<b>Were all victims located?</b> <input type="checkbox"/> Yes <input type="checkbox"/> No No Victims Located: _____		<b>NOTE:</b> <i>False Alerts - more than 1 false alert for the basic operational Test results in a NYC for this assessment</i> <i>More than one victim <u>not</u> located results in NYC for this assessment.(i.e. 6 out of 7 must be located)</i>	

OBSERVATIONS/COMMENTS		
Victim Number	CANINE	CANINE SEARCH SPECIALIST

Overall Comments

---



---



---



---

<b>SCORING SHEET</b> (Deploy a Canine to Basic Operational Level for USAR)	
Name Handler:	Name Canine: Microchip Number scanned: <input type="checkbox"/> Yes, Microchip No. _____
Name of Assessor:	Date Assessment:
Sponsoring Jurisdiction: <input type="checkbox"/> QFRS <input type="checkbox"/> NSW DART <input type="checkbox"/> FESA <input type="checkbox"/> ACTFB <input type="checkbox"/> MFB <input type="checkbox"/> SAUSAR <input type="checkbox"/> NTFB <input type="checkbox"/> TFS	

<b>SECTION 1. SEARCH WORK</b>				
CRITERIA	SCORE			
Search	1	2	3	4
<b>1. Prepare for Search</b>				
1.1 Interview, site assessment, risk assessment and search strategy				
1.2 Defines Search strategy, puts into action / adjusts where appropriate				
<b>2. Handle and Control Canine</b>				
2.1 Handler and Canine work together in a safe and appropriate manner				
2.2 Handler is able to maintain control of the canine at all times in presence of distractions				
2.3 Handler provides assistance to canine where appropriate.				
<b>3. Conduct Search</b>				
3.1 Search area is covered effectively				
3.2 Canine demonstrates willingness to work independently				
3.3 Search drive				
3.4 Agility and obstacles				
<b>4. Provide Search Debriefing</b>				
4.1 Post search information recording and recommendations				
4.2 Sketch of the search area				
<b>5. Maintain Canine Welfare and Safety</b>				
5.1 Demonstrate care safety and welfare				
<b>TOTAL ea. Search</b>				
<b>TOTAL SECTION 1.</b>				

<b>SECTION 2. ALERT WORK</b>					
Victim Number	Canine		Canine search specialist		TOTAL ea Victim
	A	B	C	D	
1					
2					
3					
4					
5					
6					
7					
<b>TOTAL SECTION 2.</b>					

<b>ASSESSMENT OUTCOME</b>				
<b>Total Section 1.</b>		Bench Mark 75% (144 pts)	<b>C</b>	<b>NYC</b>
<b>Total Section 2.</b>		Bench Mark 75% (84 pts)	<b>C</b>	<b>NYC</b>
<b>Canine Welfare and Maintenance</b> 5.2 Demonstration of Basic Canine Care			<b>C</b>	<b>NYC</b>
False Alerts	Y	N	C	NYC
	<i>Number ( ) More than 1 false alert results in a NYC</i>			
All victims found	Y	N	C	NYC
	<i>Total Number found ( ) If less than 6 result is NYC</i>			
Assessment stopped due to breach in care/safety/welfare <b>NOTE: If breach occurs this results in a NYC for this exercise</b>			<b>C</b>	<b>NYC</b>
<b>Overall Assessment</b> <b>NOTE: Must not have any NYC above</b>			<b>C</b>	<b>NYC</b>

<b>ASSESSMENT RECORD SHEET</b> (Deploy a Canine to Basic Operational Level for USAR)	
Name Handler:	Name Canine: Microchip Number scanned: <input type="checkbox"/> Yes, Microchip No. _____.
Address:	Email:
	Contact ph:
Name of Lead Assessor:	Date Assessment:
Name of Second Assessor:	
Sponsoring Jurisdiction: <input type="checkbox"/> QFRS <input type="checkbox"/> NSW DART <input type="checkbox"/> FESA <input type="checkbox"/> ACTFB <input type="checkbox"/> MFB <input type="checkbox"/> SAUSAR <input type="checkbox"/> NTFB <input type="checkbox"/> TFS	

<b>Assessment Decision</b>		
Element Assessed	Competent	Not Yet Competent
1. Prepare for Search	<input type="checkbox"/>	<input type="checkbox"/>
2. Handle and Control Canine	<input type="checkbox"/>	<input type="checkbox"/>
3. Conduct Search	<input type="checkbox"/>	<input type="checkbox"/>
4. Provide Search Debriefing	<input type="checkbox"/>	<input type="checkbox"/>
5. Maintain Canine Welfare and Safety	<input type="checkbox"/>	<input type="checkbox"/>
<b>Overall Competency Achieved for Deploy a Canine to Basic Operational Level for USAR</b>	<input type="checkbox"/>	<input type="checkbox"/>
Comments from Lead Assessor:		
Will a training plan be required as a result of this assessment?	<input type="checkbox"/> Yes	<input type="checkbox"/> No
Lead Assessor Signature:	Date:	
Second Assessor Signature:	Date:	

<b>Participant Statement of Acceptance</b>		
	Yes	No
I accept the assessment decision and agree that the process was valid and fair.	<input type="checkbox"/>	<input type="checkbox"/>
I wish to appeal against the assessment decisions	<input type="checkbox"/>	<input type="checkbox"/>
I was given feedback regarding my assessment outcome	<input type="checkbox"/>	<input type="checkbox"/>
Participant Signature	Date:	

<b>Assessment Sheet – Advanced Operational</b> (Deploy a Canine to Advanced Operational Level for USAR)	
Name Handler:	Name Canine: Microchip Number scanned: <input type="checkbox"/> Yes, Microchip No. _____.
Name of Assessor:	Date Assessment:
Sponsoring Jurisdiction: <input type="checkbox"/> QFRS <input type="checkbox"/> NSW DART <input type="checkbox"/> FESA <input type="checkbox"/> ACTFB <input type="checkbox"/> MFB <input type="checkbox"/> SAUSAR <input type="checkbox"/> NTFB <input type="checkbox"/> TFS	Search: <input type="checkbox"/> 1 of 7 <input type="checkbox"/> 2 of 7 <input type="checkbox"/> 3 of 7 <input type="checkbox"/> 4 of 7 <input type="checkbox"/> 5 of 7 <input type="checkbox"/> 6 of 7 <input type="checkbox"/> 7 of 7
Search Start Time:	Search End Time:
Location of Assessment:	

SECTION 1. SEARCH WORK		
CRITERIA	SCORE	COMMENTS
<b>1. Prepare for Search</b>		
1.1 Interview, site assessment, risk assessment and search strategy		
1.2 Defines Search strategy, puts into action / adjusts where appropriate		
<b>2. Handle and Control Canine</b>		
2.1 Handler and Canine work together in a safe and appropriate manner		
2.2 Handler is able to maintain control of the canine at all times in presence of distractions		
2.3 Handler provides assistance to canine where appropriate.		
<b>3. Conduct Search</b>		
3.1 Search area is covered effectively		
3.2 Canine demonstrates willingness to work independently		
3.3 Search drive		
3.4 Agility and obstacles		
<b>4. Provide Search Debriefing</b>		
4.1 Post search information recording and recommendations		
4.2 Sketch of the search area <i>N.B - one only sketch required out of the seven searches. Indicate N/A if sketch not required for this search.</i>		



5. Maintain Canine Welfare and Safety		
5.1 Demonstrates care, safety & welfare for the canine and themselves		
5.2 Canine search specialist is able to demonstrate basic care of the canine in an appropriate manner. <i>N.B - one demonstration only required out of the four searches. Indicate N/A if demonstration not required for this search</i>	<input type="checkbox"/> C <input type="checkbox"/> NYC <input type="checkbox"/> N/A	
Assessment stopped due to breach in care/safety/welfare	<input type="checkbox"/> Yes <input type="checkbox"/> No <b>NOTE: If breach occurs this results in a NYC for the assessment</b>	

**SECTION 2. ALERT WORK**

Victim Number	CANINE		CANINE SEARCH SPECIALIST		Total Each Victim
	Commitment to Scent (A)	Bark Alert (B)	Handler Interprets the Canine (C)	Support and Assistance (D)	
	Score:	Score:	Score:	Score:	
	Score:	Score:	Score:	Score:	
	Score:	Score:	Score:	Score:	
	Score:	Score:	Score:	Score:	
<b>Were there any false alerts?</b> <input type="checkbox"/> Yes <input type="checkbox"/> No No of False Alerts: _____		<b>Were all victims located?</b> <input type="checkbox"/> Yes <input type="checkbox"/> No No Victims Located: _____		<b>NOTE:</b> <i>False Alerts - more than 1 false alert for the advanced operational assessment results in a NYC for this assessment</i> <i>More than two victims <u>not</u> located results in NYC for this assessment.</i>	

**OBSERVATIONS/COMMENTS**

Victim Number	CANINE	CANINE SEARCH SPECIALIST

**Overall Comments**

---



---

<b>SCORING SHEET</b> (Deploy a Canine to Advanced Operational Level for USAR)	
Name Handler:	Name Canine: Microchip Number scanned: <input type="checkbox"/> Yes, Microchip No. _____.
Name of Assessor:	Date Assessment:
Sponsoring Jurisdiction: <input type="checkbox"/> QFRS <input type="checkbox"/> NSW DART <input type="checkbox"/> FESA <input type="checkbox"/> ACTFB <input type="checkbox"/> MFB <input type="checkbox"/> SAUSAR <input type="checkbox"/> NTFB <input type="checkbox"/> TFS	

<b>Section 1. Search Work</b>							
Criteria	Score						
Search Number	1	2	3	4	5	6	7
<b>1. Prepare for search</b>							
1.1 Interview, site assessment, risk assessment and search strategy							
1.2 Defines search strategy, puts into action / adjusts where appropriate							
<b>2. Handle and Control Canine</b>							
2.1 Handler and canine work together in a safe and appropriate manner							
2.2 Handler is able to maintain control of the canine at all times in presence of distractions							
2.3 Handler provides assistance to canine where appropriate.							
<b>3. Conduct Search</b>							
3.1 Search area is covered effectively							
3.2 Canine demonstrates willingness to work independently							
3.3 Search drive							
3.4 Agility and obstacles							
<b>4. Provide Search Debriefing</b>							
4.1 Post search information recording and recommendations							
4.2 Sketch of the search area <i>N.B – one only sketch required out of the seven searches. Indicate N/A if sketch not required for this search</i>							
<b>5. Maintain Canine Welfare and Safety</b>							
5.1 Demonstrates care, safety & welfare for the canine and themselves							
<b>Total Each Search</b>							
<b>Total Section 1</b>							

SECTION 2. ALERT WORK					
Victim Number	Canine		Canine search specialist		TOTAL ea Victim
	A	B	C	D	
1					
2					
3					
4					
5					
6					
7					
8					
9					
10					
11					
12					
13					
14					
<b>TOTAL SECTION 2.</b>					

ASSESSMENT OUTCOME				
Total Section 1.		Bench Mark 75% (252 pts)	C	NYC
Total Section 2.		Bench Mark 75% (168 pts)	C	NYC
Canine Welfare and Maintenance 5.2 Demonstration of basic Canine Care			C	NYC
False Alerts	Y	N	C	NYC
	Number ( ) More than 1 false alert results in a NYC			
All victims found	Y	N	C	NYC
	Total Number found ( ) If less than 12 result is NYC			
Assessment stopped due to breach in care/safety/welfare <b>NOTE: If breach occurs this results in a NYC for this exercise</b>			C	NYC
Overall Assessment <b>NOTE: Must not have any NYC above</b>			C	NYC

<b>ASSESSMENT RECORD SHEET</b> (Deploy a Canine to Advanced Operational Level for USAR)	
Name Handler:	Name Canine: Microchip Number scanned: <input type="checkbox"/> Yes, Microchip No. _____.
Address:	Email:
	Contact ph:
Name of Lead Assessor:	Date Assessment:
Name of Second Assessor:	
Sponsoring Jurisdiction: <input type="checkbox"/> QFRS <input type="checkbox"/> NSW DART <input type="checkbox"/> FESA <input type="checkbox"/> ACTFB <input type="checkbox"/> MFB <input type="checkbox"/> SAUSAR <input type="checkbox"/> NTFB <input type="checkbox"/> TFS	

<b>Assessment Decision</b>		
Element Assessed	Competent	Not Yet Competent
1. Prepare for Search	<input type="checkbox"/>	<input type="checkbox"/>
2. Handle and Control Canine	<input type="checkbox"/>	<input type="checkbox"/>
3. Conduct Search	<input type="checkbox"/>	<input type="checkbox"/>
4. Provide Search Debriefing	<input type="checkbox"/>	<input type="checkbox"/>
5. Maintain Canine Welfare and Safety	<input type="checkbox"/>	<input type="checkbox"/>
<b>Overall Competency Achieved for Deploy a Canine to Advanced Operational Level for USAR</b>	<input type="checkbox"/>	<input type="checkbox"/>
Comments from Lead Assessor:		
Will a training plan be required as a result of this assessment?	<input type="checkbox"/> Yes	<input type="checkbox"/> No
Lead Assessor Signature:	Date:	
Second Assessor Signature:	Date:	
<b>Participant Statement of Acceptance</b>		
	<b>Yes</b>	<b>No</b>
I accept the assessment decision and agree that the process was valid and fair.	<input type="checkbox"/>	<input type="checkbox"/>
I wish to appeal against the assessment decisions	<input type="checkbox"/>	<input type="checkbox"/>
I was given feedback regarding my assessment outcome	<input type="checkbox"/>	<input type="checkbox"/>
Participant Signature	Date:	

## Assessment Descriptors – Basic and Advanced Levels

ASSESSMENT DESCRIPTORS	PTS	DESCRIPTION
<b>SECTION 1. SEARCH WORK</b>		
<b>1. Prepare for Search</b>		
1.1 Interview, site assessment, Risk Assessment and search strategy	4	Very good interview techniques, asked all relevant questions, all environmental factors considered, all risks identified, assessed and appropriate safety measures implemented.
	3	Good interview techniques, asked most relevant questions and considered essential environmental factors. Most risks identified, assessed and appropriate safety measures implemented.
	2	Satisfactory interview techniques, covered many essential questions and environmental factors. Many risks identified, assessed and appropriate safety measures implemented.
	1	Interview techniques poor, only a few essential questions and environmental factors covered. Most risks not identified, assessed and appropriate safety measures implemented.
	0	Did not ask questions during or after interview or consider any environmental factors. No risks identified, assessed and appropriate safety measures implemented.
1.2 Defines search strategy, puts into action / adjusts where appropriate	4	Has defined the tactical situation correctly and has converted into action, optimal handling, very good team work.
	3	Has defined the tactical situation and has converted into action with small restrictions in keeping distance, good teamwork.
	2	Partially defined tactical situation and has converted into action, restriction in keeping distance/ management, teamwork still noticeable.
	1	Partially defined tactical situation, has not converted into action, large restriction in keeping distance/manage, teamwork hardly noticeable.
	0	Has not defined tactical situation, keeping distance/ management very restricted, no team work.
<b>2. Handle and Control of Canine</b>		
2.1 Handler and canine work together in a safe and appropriate manner	4	Team works in a calm, confident and methodical manner, team does not rush, handler adheres to all site restrictions including, no go areas and defined hazards.
	3	Team mostly works in a calm, confident and methodical manner, team does not rush, handler mostly adheres to site restrictions including no go areas and defined hazards.
	2	Team partially works in a calm, confident and methodical manner, team may rush or is partially restricted over site, handler partially adheres to site restrictions including no go areas and defined hazards.
	1	Team rarely works in a calm, confident and methodical manner, team rushes or is restricted over site, handler rarely adheres to site restrictions such as no go areas and defined hazards.
	0	Team does not work in a calm, confident and methodical manner, team rushes / is restricted over site, handler does not adhere to site restrictions including no go areas or defined hazards.
2.2 Handler is able to maintain control of the canine at all times in the presence of distractions	4	Canine is always responsive to direction controls, handler has the ability to recall the canine and the canine responds to an emergency stop where appropriate, very good ability of canine to handle distractions.
	3	Canine is mostly responsive to direction controls, handler has the ability to recall the canine and the canine responds to an emergency stop where appropriate, good ability of canine to handle distractions.
	2	Canine is partially responsive to direction controls, handler partially has the ability to recall the canine and the canine partially responds to an emergency stop where appropriate, canine partially able to handle distractions.
	1	Canine is rarely responsive to direction controls, handler rarely has the ability to recall the canine and the canine responds to an emergency stop where appropriate, canine demonstrated poor ability to handle distractions.
	0	Canine is not responsive to direction controls, handler does not have the ability to recall the canine and the canine does not respond to an emergency stop where appropriate, canine is not able to handle distractions.
2.3 Handler provides assistance to canine where appropriate	4	Handler was very attentive, read the canine very well and was always prepared to assist by stopping and restarting the search, guiding the canine, providing positive reinforcement.
	3	Handler was mostly attentive, mostly read the canine well and was prepared to assist by stopping and restarting the search, guiding the canine, providing positive reinforcement.
	2	Handler was partially attentive, partially read the canine well and was partially prepared to assist by stopping and restarting the search, guiding the canine, providing positive reinforcement.
	1	Handler was rarely attentive, rarely read the canine well and was rarely prepared to assist by stopping and restarting the search, guiding the canine, providing positive reinforcement.
	0	Handler was not attentive, did not read the canine well and did not assist by stopping and restarting the search, guiding the canine, providing positive reinforcement.

ASSESSMENT DESCRIPTORS	PTS	DESCRIPTION
<b>3. Conduct Search</b>		
3.1 Search area is covered effectively	4 3 2 1 0	Canine moved over the search area very confidently and was responsive to handler control at all times. Minimal hesitation, moved over area well, covers search area and was mostly responsive to handler control. Some marked hesitation moving over pile, partially covers search area, handler partially maintained control. Displayed significant hesitation moving over pile Handler was unable to maintain control over canine at all times. Canine did not cover search site as directed. Handler had no control over the canine.
3.2 Canine demonstrates willingness to work independently	4 3 2 1 0	Is very independent, largely works out of own inner drive. Is independent, however has to be commanded to continue working from time to time. Independence still recognisable, has to be frequently commanded to continue working. Independence largely lacking, has to be constantly commanded to continue working. No independence, does not work out of own inner drive at all.
3.3 Search drive	4 3 2 1 0	Very good search drive. Lively, very motivated and keen to work. Good search drive. Largely motivated and keen to work, loses endurance somewhat. Satisfactory search drive. Partially motivated / keen to work, stands, 'questions' , endurance clearly diminishes. Almost no search drive. Motivation lacking, almost no desire to work, often stands, 'questions' often, endurance unsatisfactory. No search drive, no motivation, no desire to work, no endurance.
3.4 Agility and obstacles	4 3 2 1 0	Is very agile, very good mobility over the rubble, does not avoid difficulties. Is agile, good mobility over the rubble pile, hardly avoids difficulties. Is partially still agile, some problems moving over the rubble, avoids some difficulties. Is hardly agile, hardly able to move over the rubble, practically avoids all difficulties. Is not agile, not mobile over the rubble, avoids all difficulties.
<b>4. Debrief Search</b>		
4.1 Post search information recording and recommendations	4 3 2 1 0	Gives a very detailed debrief, clearly defines what has been searched, clearly defines location of any potential victims, makes appropriate recommendations. Gives a detailed debrief, is mostly able to define what has been searched, is able to define location of any potential victims, makes appropriate recommendations. Gives partially detailed debrief, partially able to define what has been searched, partially able to define location of any potential victims, partially able to give appropriate recommendations. Debrief lacks detail, partially able to define what has been searched, partially able to define location of any potential victims, does not give any recommendations. Does not give debrief, can not define what has been searched, can not define location of any potential victims, does not give any recommendations.
4.2 Sketch of the search area	4 3 2 1 0	Gives a very detailed sketch, contains all relevant information, easily understood and interpreted. Gives good level of detail in sketch, contains most of the relevant information, is easily understood and interpreted. Gives a partially detailed sketch, partially contains relevant information, is understandable with some difficulties in interpretation. Detail is largely lacking, partially contains relevant information, map is difficult to interpret. Unable to sketch search area, map does not contain any relevant information, is unable to be understood or interpreted.
<b>5. Canine Welfare and Safety</b>		
5.1 Demonstrates care, safety & welfare for the canine and themselves	4 3 2 1 0	Handler was very attentive, read canine's well-being very well, always prepared to act, watered canine as required, managed fatigue very well and conducted very good post search welfare check. Handler was attentive, read canine's well-being, prepared to act as required, watered canine as required, managed fatigue well and conducted good post search welfare check. Handler was partially attentive, partially read canine's well-being, prepared to act, attempts to water canine, partially managed fatigue and did not conduct a thorough post search welfare check. Was rarely attentive, rarely read canine's well-being, was rarely prepared to act, and rarely considered watering canine. Did not manage fatigue or conduct a post search welfare check. Was not attentive, did not read canine's well-being, not prepared to act, and did not consider watering canine. Did not manage fatigue or conduct a post search welfare check.
5.2 Canine is compliant with basic care routines	4 3 2 1 0	Handler is able to perform exams and treatment of minor injuries and contaminations competently. Handler is able to perform exams and treatment of minor injuries and contaminations with minor restrictions. Handler is partially able to perform exams and treatment of minor injuries and contaminations. Handler is barely able to perform exams and treatment of minor injuries and contaminations. Handler is unable to perform exams and treatment of minor injuries and contaminations.

SECTION 2.		ASSESSMENT OF THE ALERT
<b>Canine</b>		
Commitment to live human scent (A)	4	Very good penetration drive, is committed to the scent, does not leave victim location.
	3	Good penetration drive, remains at the victim location but may look back at the handler but is still committed to the scent.
	2	Penetration drive present but is distracted by other smells, leaves the victim location but returns – may need handler commands to return, commitment to scent still present.
	1	Hardly any penetration drive, repeatedly leaves the victim location, needs significant handler support, often looks back at the handler, little commitment to the scent.
	0	No penetration drive or commitment to scent, leaves the victim location, returns to the handler, ignores handler's commands.
Bark Alert (B)	4	Spontaneous, independent, excellent barking, penetration drive is very good.
	3	Partially needs some support, barks with slight interruptions, penetration drive still good.
	2	Needs a lot of support, hesitant barking, with large interruptions, still good, noticeable penetration drive.
	1	Needs a lot of support, hardly barks or not at all, almost no penetration drive.
	0	No reaction to handler's support, no alert, no penetration drive.
<b>Canine search specialist</b>		
Handler interprets alert behaviour / identification of scent location (C)	4	Excellent interpretation of canine alert behaviours and environmental / site conditions. Correctly identifies location of victim. Gives detailed feedback at all times.
	3	Good interpretation of canine alert behaviours and environmental / site conditions. Correctly identifies location of victim. Gives adequate feedback most of the time.
	2	Partially able to interpret canine behaviours and environmental / site conditions. Partially able to identify location of victims. Gives limited feedback some of the time.
	1	Hardly able to interpret canines alert behaviours, and environmental / site conditions. Is hardly able to identify location of victims. Hardly gives feedback.
	0	Is unable to interpret canines alert behaviours, and environmental / site conditions. Can not identify the location of victims. Does not give any feedback at any stage.
Support and assistance (D)	4	Conducts him/herself correctly, supports where necessary, able to read the canine perfectly.
	3	Generally conducts him/herself correctly, still supports well (possibly too or much too little) still good reading of the canine.
	2	Restrictions, eg misses the alert, impedes canine during the alert, supports too much or not enough, not able to always read the canine.
	1	Causes false alert, misses the alert, impedes the canine in his alert behaviour, no (or wrong) support, hardly able to read the canine.
	0	Causes many false alerts, no support, not able to read the canine.

## **Code of Conduct for Canine Teams**

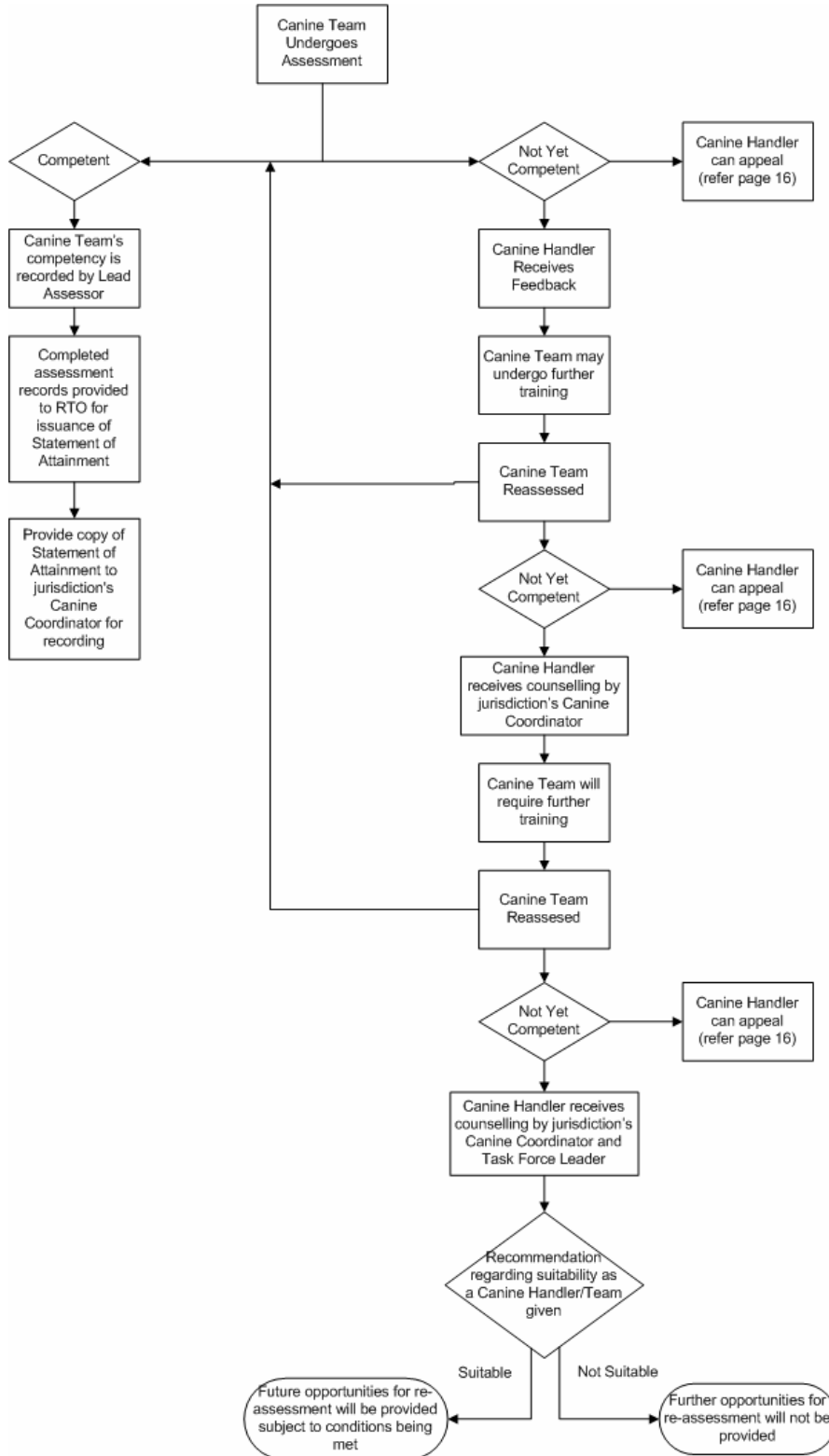
1. The conduct of deployed USAR team members is a primary concern to jurisdictional task forces, INSARAG, the assisting and affected countries and the local officials of the affected country.
2. USAR teams should always aim to be perceived as representatives of a well organised, highly trained group of specialists who have been assembled to help communities in need of their specialist assistance. At the conclusion of a mission, USAR teams should have ensured their performance has been positive, and they will be remembered for the outstanding way they conducted themselves in the work environment and socially.
3. Ethics considerations include human rights, legal, moral and cultural issues, and concerns the relationship between USAR team members and the community of the affected country.
4. All members of a USAR team are ambassadors of their team and their country and any violation of principles or behaviour unbecoming by team members will be viewed as unprofessional. Any inappropriate behaviour may discredit the good work of the USAR team and will reflect poorly on the entire team's performance and their home country.
5. At no time during a mission should USAR team members take advantage of or exploit any situation or opportunity, and it is the responsibility of all team members to conduct themselves in a professional manner at all times.

### **Sensitive Issues to Consider**

1. The value that the local community attaches to life
2. Cultural awareness including race, religion and nationality
3. Communication barriers due to language differences
4. Differences in work ethics and values
5. Different local apparel
6. Local customs with regard to food, manners etc
7. Local law enforcement practices
8. Local policy on weapons
9. Local living conditions
10. Local driving habits and customs
11. Local policy on the use of different medications
12. Use of alcohol and illegal drugs
13. Handling of sensitive information
14. Use of search canines
15. Care and handling of patients and/or the deceased
16. Dress code or standards
17. Gender restrictions
18. Recreational restrictions
19. Local communication restrictions and accepted use
20. Taking of and showing pictures of victims or structures
21. Collecting of souvenirs (building parts etc.)
22. Defacing property such as occurs with the use of the structural marking system
23. Access into restricted areas (Military, religious, etc)
24. Moral standards
25. Consideration for other teams' capabilities and operating practices
26. Use of gratuities to promote cooperation
27. Political issues
28. Any actions or behaviour that may aggravate stressful situations.



## Not Yet Competent Assessment Process



## **Guidelines for Construction of Preparatory Training Facilities**

The following facility construction guidelines are to be adopted by canine teams for the purpose of:

1. Annual re-certification assessments to meet the requirements of the Develop a Canine Team to Foundation Level for USAR Incidents unit  
and
2. Whilst undertaking completion of the following units of competency;
  - Develop a Canine Team to Basic Operational Level for USAR Incidents
  - Develop a Canine Team to Advanced Operational Level for USAR Incidents

These guidelines include the following:

1. Obedience Course
2. Agility Course
3. Direction and Control Course
4. Alert Hole Exercise
5. Fundamental Simulated Search Course

## Obedience Course

### Rationale of Exercise

The canine must be under the control of the canine search specialist at all times and non-aggressive to both people and other canines. The canine, for its safety, must be responsive to an emergency stop command.

The obedience course includes the following components:

- Right turn x2
- Left turn x2
- About turn x2
- Halt x 5
- Changes of pace (normal pace, fast pace, slow pace)
- Down stay with distraction
- Emergency stop with recall.

The obedience course shall consist of an appropriately sized area that has been removed of all hazards to the canine and canine search specialist (i.e. pot holes, tall grass etc)

It is suggested that the following points be marked on the ground:

- Start points for obedience (refer to the following diagrams)
- Down stay positions for canines
- Start position and down position for the emergency stop exercise

### General Guidance Notes

Heeling is defined as the canine maintaining position at either side of the canine search specialist so as to be attentive to the canine search specialist and under their control at all times. Additional or repetitive commands are acceptable. The same combination and order of commands is to be used by the assessors for all canine teams being assessed.

A change of pace must be demonstrated by the canine team in the heel work.

### Down Stay Under Distraction Guidance Notes

A minimum of three canines must be present for this exercise. This can consist of one canine being assessed and two canines not being assessed, or a combination. Canines must be placed 2-3 metres apart.

The canine must commence a ten minute stay in the down position and no further commands may be given for this exercise. The canine search specialist shall stay in view of the canine for the first five minutes then move to a designated area out of the canine's sight for the next five minutes. If a canine fails the assessment and in the assessor's opinion has unreasonably distracted the other canines then the stay test can be repeated but not for the canine that moved first. There shall be no leads left on or near the canines when in the stay position.

### Emergency Stop with Recall Guidance Notes

The rationale behind demonstrating an emergency stop is that the canine must be responsive to an emergency stop command. The key assessment criteria should be that it responds to the command given in a timely fashion.

The position in which the canine starts (i.e. it's stay position) is optional. The position in which the canine stops after being given the emergency stop command is suggested to be the down position. The distance of the stay position from the start point will be between 25-30 metres.

The canine shall be placed 25 metres from the canine search specialist and the assessor. Upon direction from the assessor, the canine search specialist shall call their canine. The canine search specialist will then stop their canine when directed by the assessor. Once the stop command has been given, an immediate change in gait is required and the canine must then come to a complete stop. The canine will be assessed by the quickness of its response. The canine search specialist may give multiple commands. The canine shall remain stationary until recalled by the canine search specialist at the direction of the assessor.

### **Aggression Assessment Guidance Notes**

As a minimum the aggression assessments must include the following;

1. The canine must complete a Figure 8 around two canine search specialists with their canines ("post teams") on lead sitting at their side and spaced between 2 and 3 metres apart. The testing team shall complete the pattern, on loose lead, passing within 1 metre of each of the post teams. The canines belonging to the post teams must act in a neutral manner.
2. A crowd of between 4-6 people walking around during heel work
3. The canine search specialist ties up the canine and leaves it unattended. The canine search specialist proceeds to a designated area out of the canine's sight. After a minimum of one minute out of sight, a stranger unties the canine and returns the canine to the canine search specialist. The stranger must act in a friendly and neutral manner.

The above aggression assessments can be incorporated into the obedience course or conducted as separate exercises.

The following diagrams (1 – 4) are example course layouts for consideration when designing obedience and aggression exercises. All distances will be determined by the lead assessor at the time of the assessment and may not necessarily reflect the below examples.

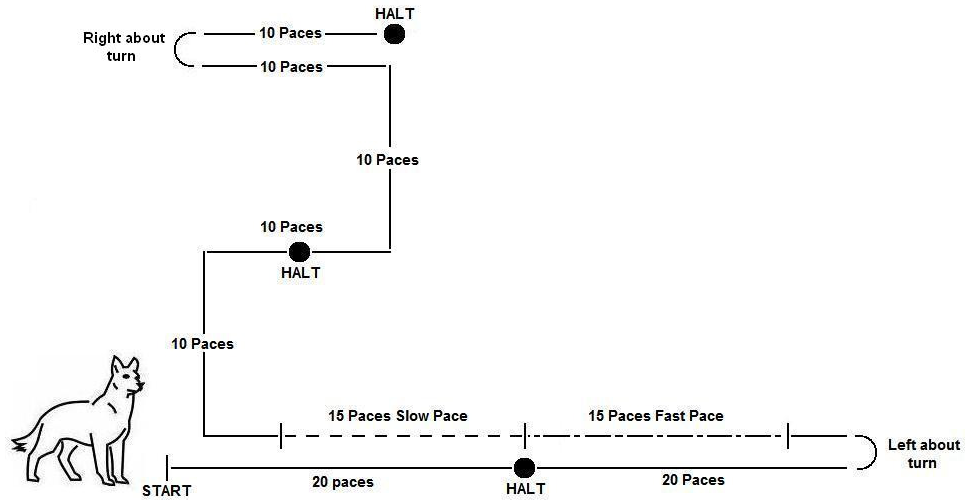


Diagram 1 – Example Obedience Course with no Aggression exercises

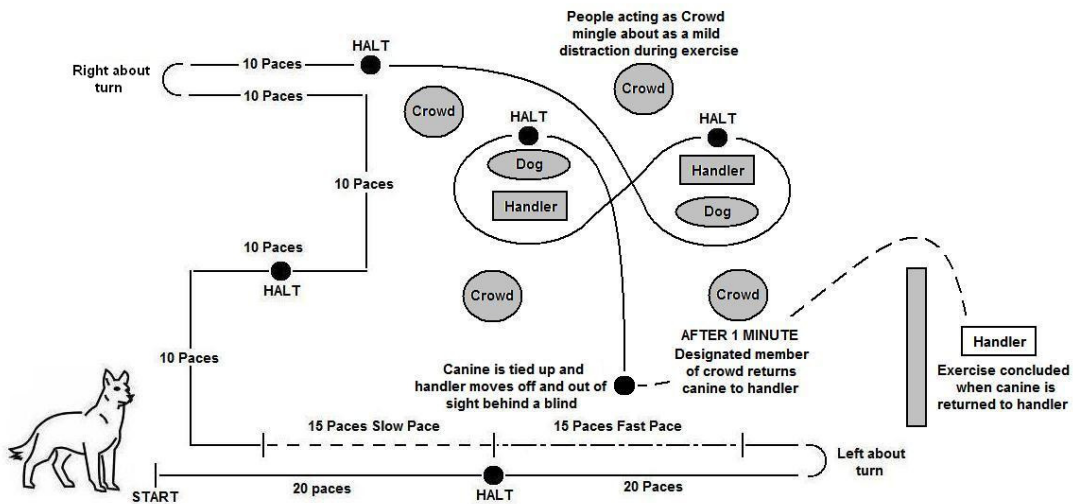


Diagram 2 – Example Obedience Course with Aggression exercises

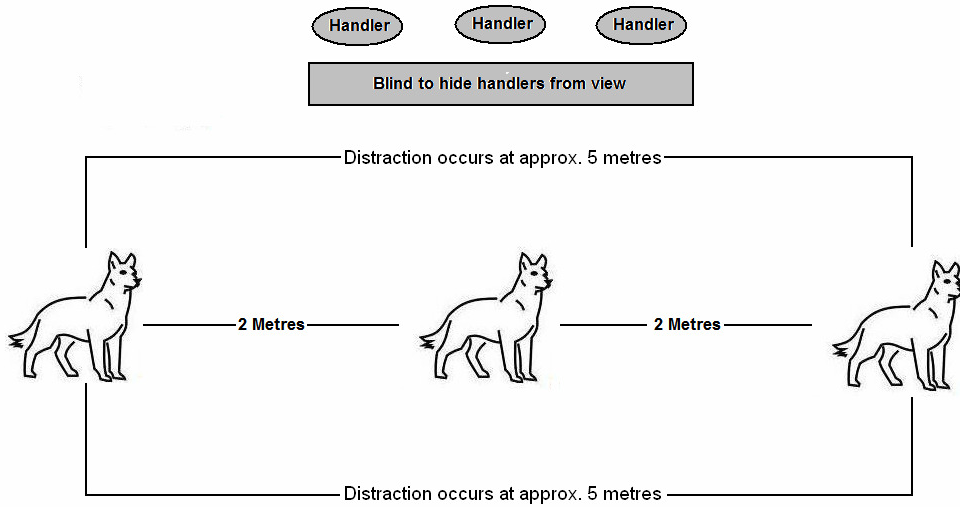


Diagram 3 - Down Stay Under Distraction Exercise

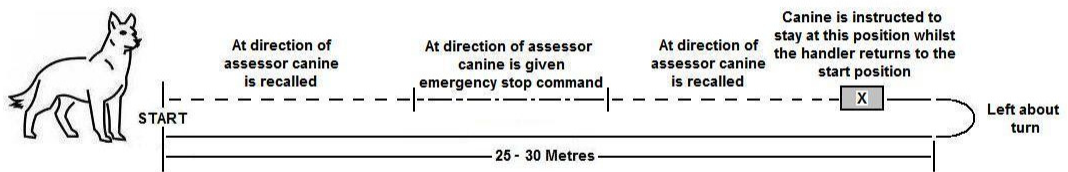


Diagram 4 - The Emergency Stop with Recall

## Agility Course

### Rationale

The canine should be able to search rubble areas without the canine search specialist being overly concerned about its safety. In order to safely search the rubble for victims, the canine must acquire certain specific skills and overcome some of its natural instincts. Specialised agility training will give the canine confidence on rubble.

The agility course must consist of the following obstacles:

1. Climbing (upwards and downwards)  
The construction of this obstacle for the **upward** climbing component must include;
  - One upwards ladder (with a vertical height of between 1.5 – 2 metres) secured at a 45-degree angle (with round or flat rungs)  
The **downwards** climbing component can include one from the following;
  - One downwards steep staircase (with a vertical height of between 1.5 – 2 metres) with flat steps secured at a 45-degree angle.
  - One downward plank (220 to 300mm wide) of a length that when in place is at an angle of approximately 30 degrees
  - One downward ladder with flat rungs (with a vertical height of between 1.5 – 2 metres) secured at a 45-degree angle.
2. Elevated Plank
  - A plank elevated at least 1 metre and no more than 2 metres off the ground. The plank must be 220 to 300mm wide, 3-5m long and is to be stable with a non-slip surface.
3. Unstable Surface may include;
  - Unsteady/wobbly surface 3 metres in length (warped boards, wobbly palettes etc), not more than 1 metre off the ground.
  - A moving plank- sitting on two 200 litre drums (3 metres long by 220 to 300 mm wide)
  - A seesaw (3 metres long x 220-300mm wide on a pivot point of 300mm to 500mm height)

*N.B – A minimum of one unstable surface must be present in the agility course.*
4. Unpleasant Surface may include;
  - A slick, slippery or unpleasant surface e.g sheet of wet corrugated iron, plastic sheeting, box filled with PET bottles, metal mesh.
  - A horizontal ladder placed approximately one metre off the ground

*N.B – A minimum of one unpleasant surface must be present in the agility course.*
5. Tunnel
  - A dark, narrow tunnel/passageway containing one right angle turn and at least 3 metres in length total. The canine should not be able to see from one end of the tunnel to the other. Partial covering of the exit is permitted. The canine should fit into the tunnel without crawling.

## Direction and Control Course

### Rationale

In order to search areas that the canine search specialist may not access or to avoid a hazardous area, the canine must demonstrate the ability to be directed and controlled by the canine search specialist.

The direction and control course must be constructed as follows:

- The course shall be laid out in a diamond shape.
- The start shall be clearly marked as a starting line and shall be between three and ten metres wide (see diagram).
- The centre elevation should be between 20 and 25 metres from the base of the starting line. All the other elevations should be between 20 and 25 metres from the centre elevation.
- The elevations should be clearly visible to the canine.
- The elevations should be approximately one metre wide and between 600 – 900 mm high.
- The elevations may consist of two or three different types of objects.
- The centre elevation shall be lower than the outer elevations
- The course shall be conducted in a flat and open area without any significant obstacles, other than the four elevations.
- The numbering / order of the platforms is determined at the assessors discretion. Numbering and order outlined below is an example only and should be clearly marked with a number at the time of the assessment.
- The assessor will instruct the canine search specialist in relation to which platform to direct their canine to. The canine search specialist will then direct their canines.
- When moving from one elevated platform to the next the canine must return to the centre platform first before being directed to the next elevated platform. The canine is not required to remain on the centre platform for five seconds.

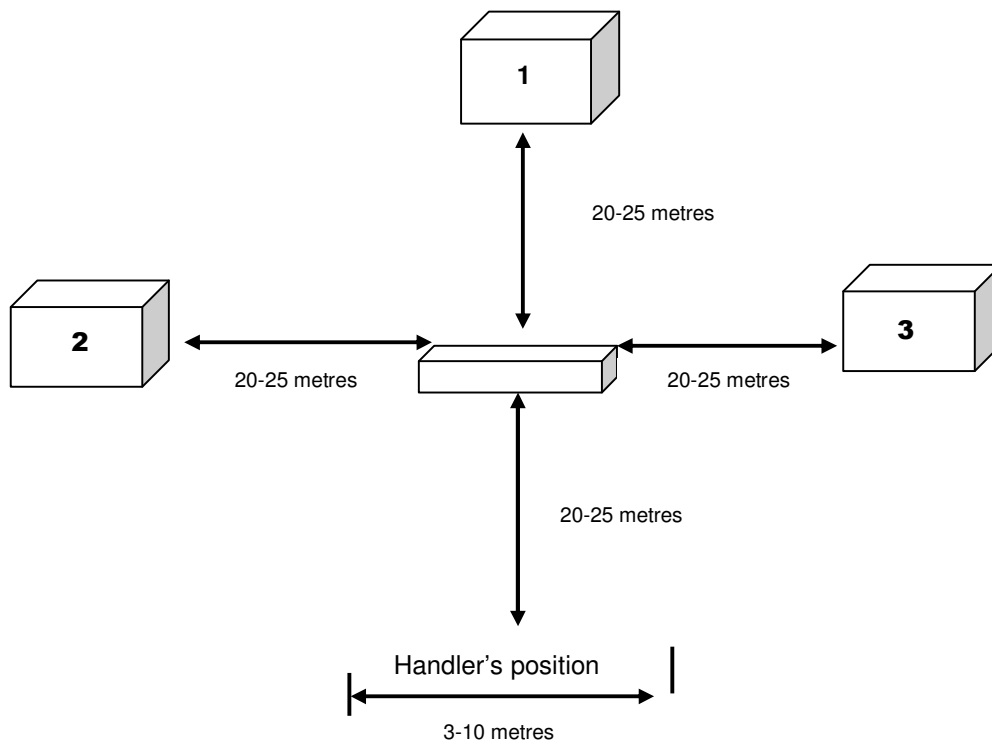


Diagram 5 – Direction and Control Course Construction



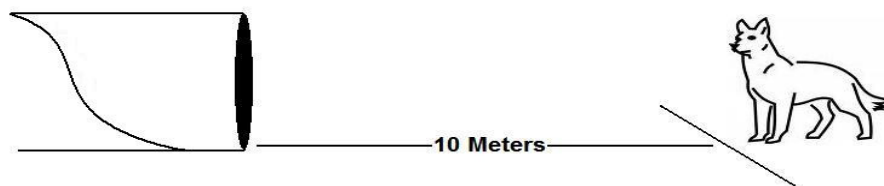
## Alert Hole Exercise

### Rationale

Due to the varied and stressful demands of disaster search, an enthusiastic and obvious bark alert is imperative. Penetration and digging is desired to help identify the scent source. This exercise is designed to assess the strength of the canine's bark alert.

The alert hole exercise must be constructed as follows:

- This exercise consists of one alert hole
- Start line is to be clearly marked on the ground ten metres in front of the hiding place.
- The alert hole is to be situated away from the search area and is to be clearly visible and known to the canine search specialist.
- The helper is to be in the hiding place for a minimum of ten minutes prior to commencement of the assessment.



Start line clearly marked on ground

- The alert hole may be a pipe, a box, culvert etc and is to be closed by a lid.
- The lid is to be a good fit with the hiding place and must contain holes drilled in the pattern defined in the diagram below.
- The lid should have a sturdy handle on the inside to ensure that the helper can keep the lid in place.
- The lid must have a line clearly visible to define the height to the lid is covered with sand
- Sand pit in front of the alert hole must be minimum size of a one metre square and have a minimum depth of 100mm.
- There shall be enough sand so that the lid can be covered to the marking on the lid whilst still maintaining a minimum depth of 100mm.

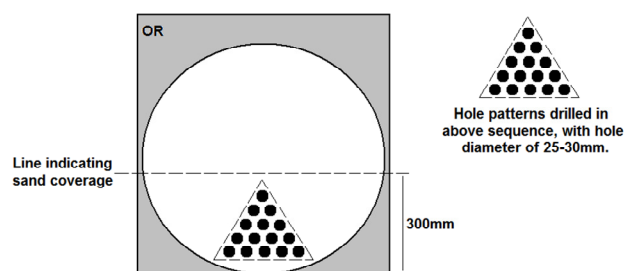


Diagram 6 – Example Alert Hole Construction

## Fundamental Simulated Search Course

- The area will consist of an area 500 – 1000 sq. metres with a minimum height of 2.5 metres at the highest spot
- One of the search areas must have a minimum difference in level of 1.5 metres.
- The intention is to provide criteria to adjust the footprint of the pile based on the complexity and height, with more complex rubble reduced in area and less complex rubble increased in area.
- Where possible the rubble debris should consist of concrete, wood, mixed material, partially or completely collapsed structures.
- Distractions should be limited to noise distractions only; such as running generators, machinery, rescue tools, etc.
- Victims shall be well concealed from both canine and canine search specialist
- The hiding places shall be constructed in such a manner as to prevent canines from accessing the victims
- All victims shall have a radio with earpiece and shall be monitored regularly
- Victims must be placed at least ten minutes before the assessment
- The assessors must have clear view of the canines work at all times
- Barrier tape shall be used to reduce search areas when larger search sites are being used
- Barrier tape may also be used to define canine search specialist restrictions
- Victims shall be placed at least five metres from each other
- Victims should not be familiar to the canine (as a guideline the canine must not have searched for the victim within eight weeks of the assessment).